

# Goat Mountain Project

## Table of Contents for Appendix A

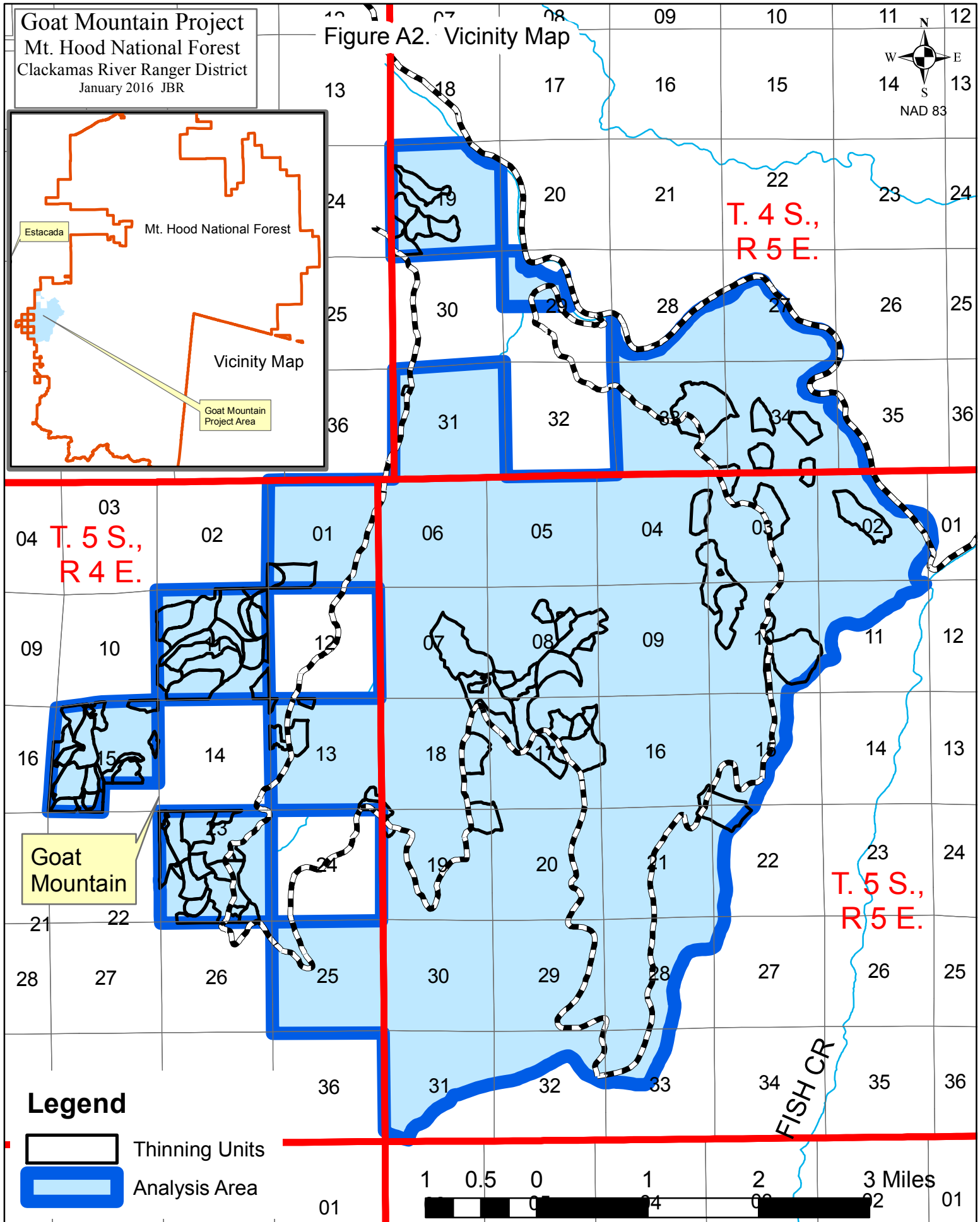
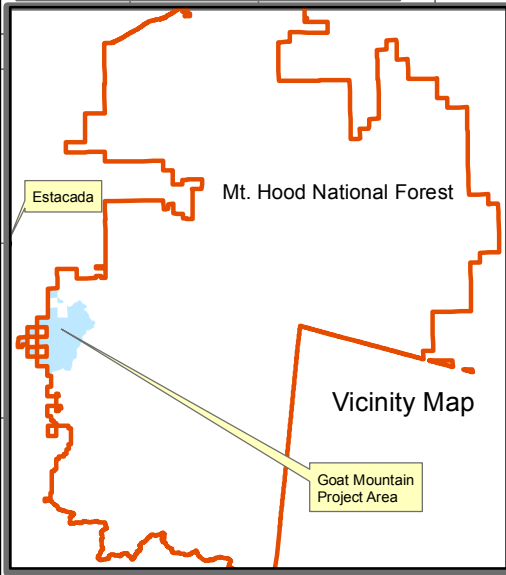
### Maps

|            |   |
|------------|---|
| A2         | Vicinity – Township & Range, Sections, Project Area                             |
| A3         | Watershed   |
| A4         | Recent Fires  |
| A5         | Land Allocations  |
| A6         | Oregon & California Railroad Lands  |
| A7         | Scenery – Visual Quality Objectives   |
| A8         | Deer and Elk  |
| A9         | Northern Spotted Owl – Late-Successional Reserve, Critical Habitat, Home Ranges |
| A10 to end | Units, System Roads, Temporary Roads, Contour lines                             |

This product is reproduced from information prepared by the USDA, Forest Service or from other suppliers. The Forest Service cannot assure the reliability or suitability of this information for a particular purpose. The data and product accuracy may vary due to compilation from various sources, including modeling and interpretation, and may not meet National Map Accuracy Standards. This information may be updated, corrected or otherwise modified without notification. For more information contact: Mt. Hood National Forest Supervisors Office at 503-668-1700. The USDA is an equal opportunity provider and employer.

Goat Mountain Project  
Mt. Hood National Forest  
Clackamas River Ranger District  
January 2016 JBR

Figure A2. Vicinity Map



**Legend**

-  Thinning Units
-  Analysis Area

This product is reproduced from information prepared by the USDA, Forest Service or from other suppliers. The Forest Service cannot assure the reliability or suitability of this information for a particular purpose. The data and product accuracy may vary due to compilation from various sources, including modeling and interpretation, and may not meet National Map Accuracy Standards. This information may be updated, corrected or otherwise modified without notification. For more information contact: Mt. Hood National Forest Supervisors Office at 503-668-1700. The USDA is an equal opportunity provider and employer.

Figure A3. Watersheds

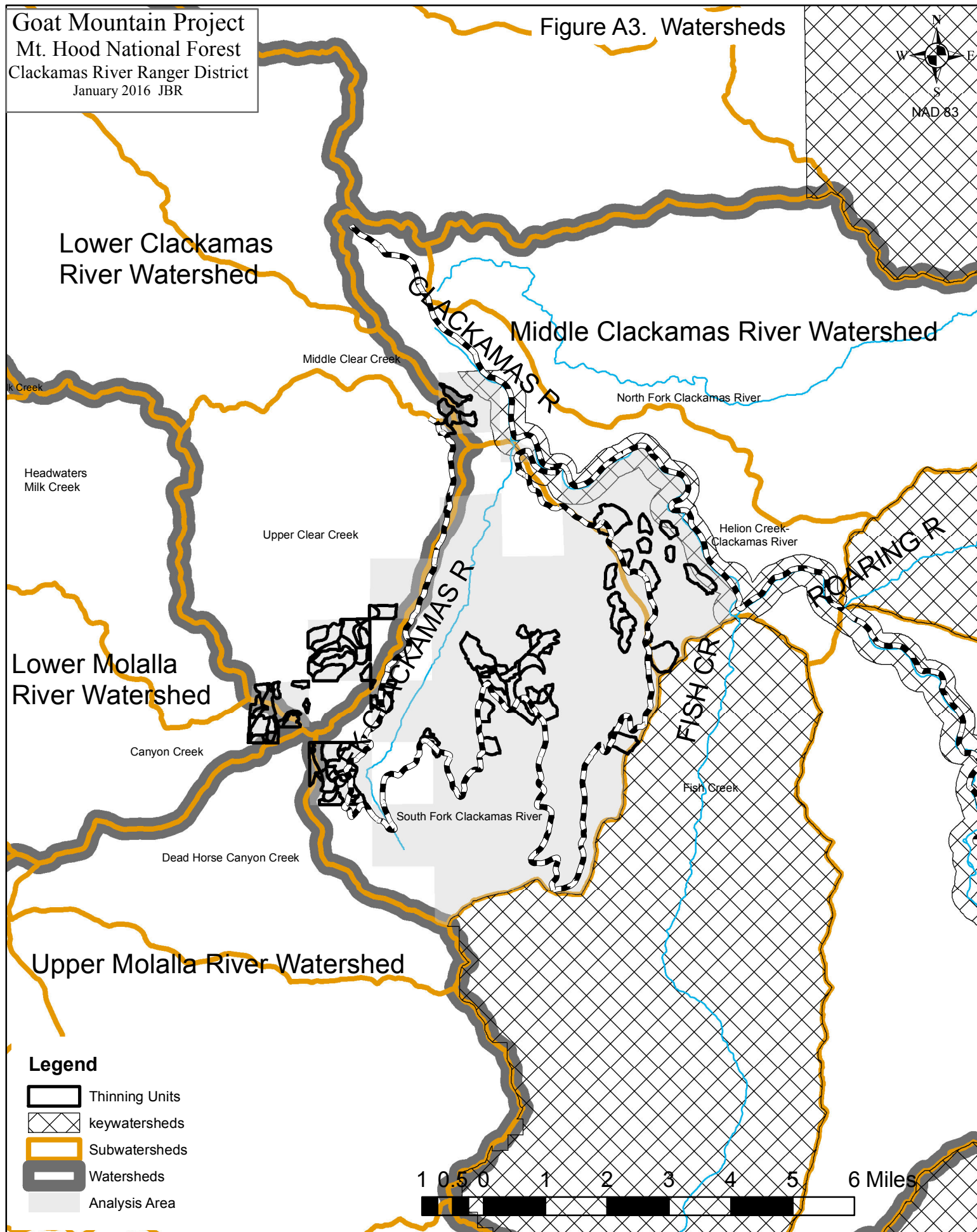
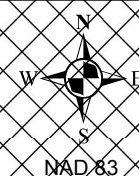
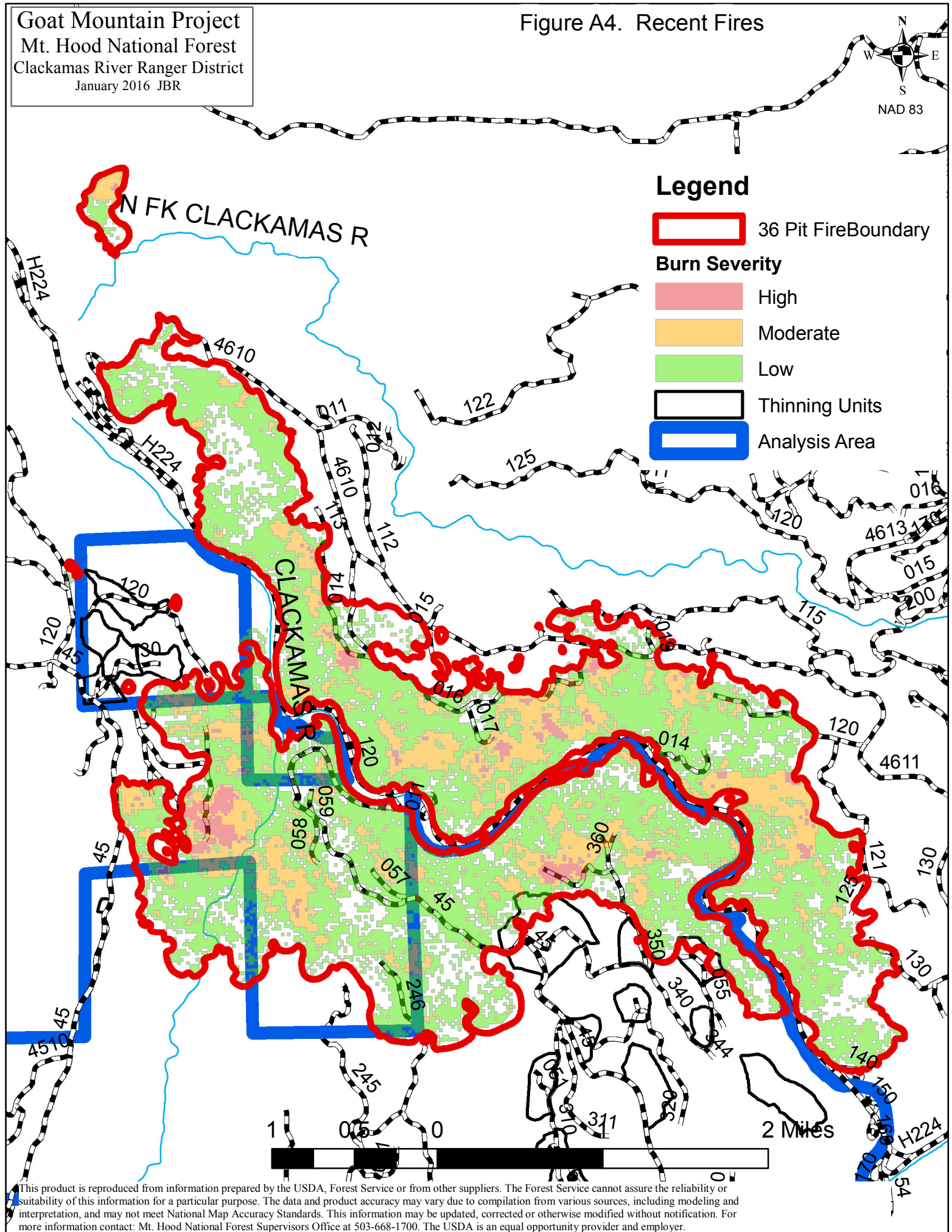




Figure A4. Recent Fires



This product is reproduced from information prepared by the USDA, Forest Service or from other suppliers. The Forest Service cannot assure the reliability or suitability of this information for a particular purpose. The data and product accuracy may vary due to compilation from various sources, including modeling and interpretation, and may not meet National Map Accuracy Standards. This information may be updated, corrected or otherwise modified without notification. For more information contact: Mt. Hood National Forest Supervisors Office at 503-668-1700. The USDA is an equal opportunity provider and employer.



Figure A5. Land Allocation



## Legend

- Thinning Units
- Shooting Restoration
- Quarries
- Vista Enhancement
- Bough Management Area
- Analysis Area

## Legend

### Land Allocations

- A1 - Wild and Scenic River
- A2 - Wilderness
- A13 - Bald Eagle Mangement Area
- B2 - Viewshed
- B8 - Earthflow
- C1 - Timber Emphasis
- Late-successional Reserves
- Riparian Reserves

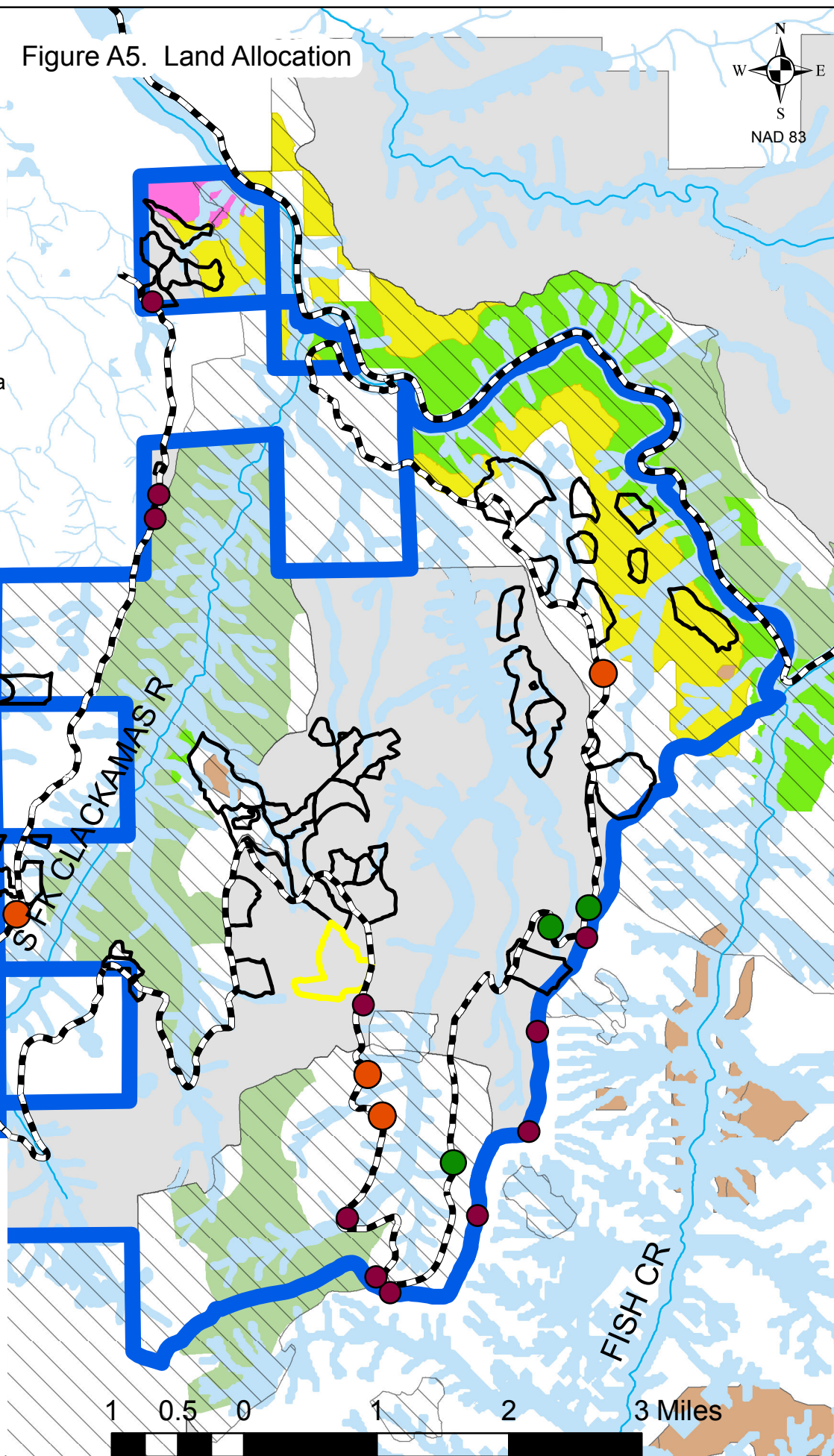


Figure A6. O&C Lands



**Legend**

-  Thinning Units
-  Analysis Area
-  O & C Lands

This product is reproduced from information prepared by the USDA, Forest Service or from other suppliers. The Forest Service cannot assure the reliability or suitability of this information for a particular purpose. The data and product accuracy may vary due to compilation from various sources, including modeling and interpretation, and may not meet National Map Accuracy Standards. This information may be updated, corrected or otherwise modified without notification. For more information contact: Mt. Hood National Forest Supervisors Office at 503-668-1700. The USDA is an equal opportunity provider and employer.

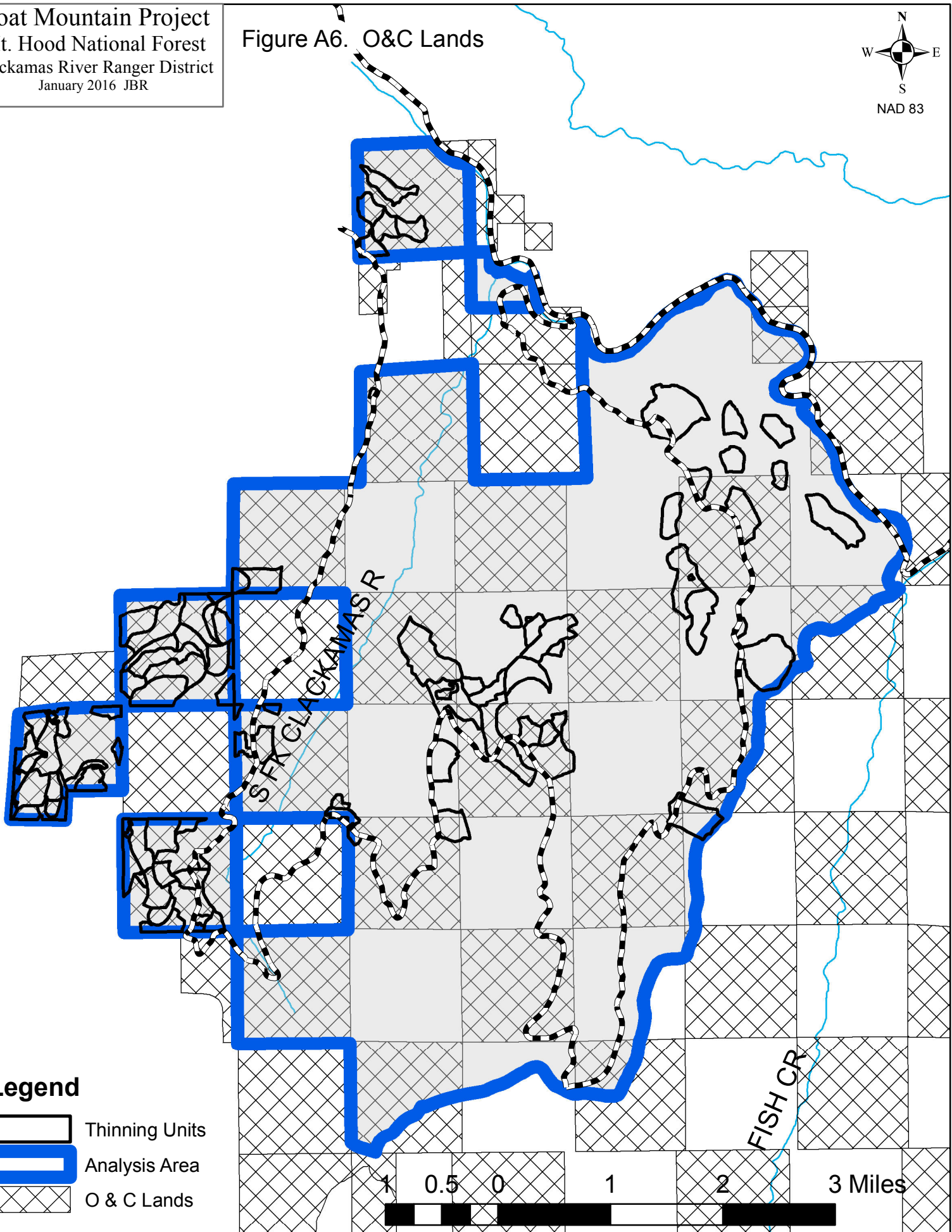




Figure A7. Recreation and Scenery

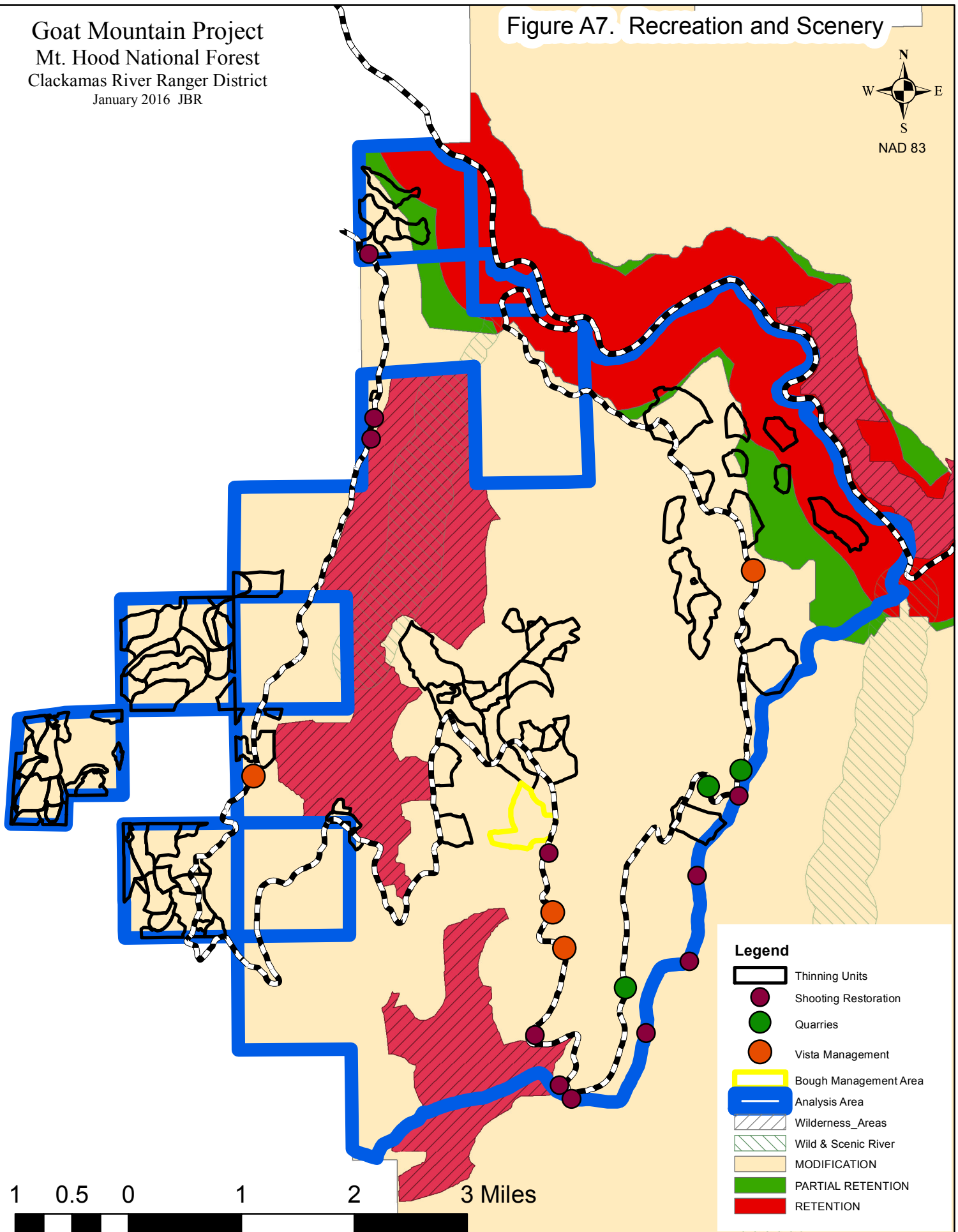


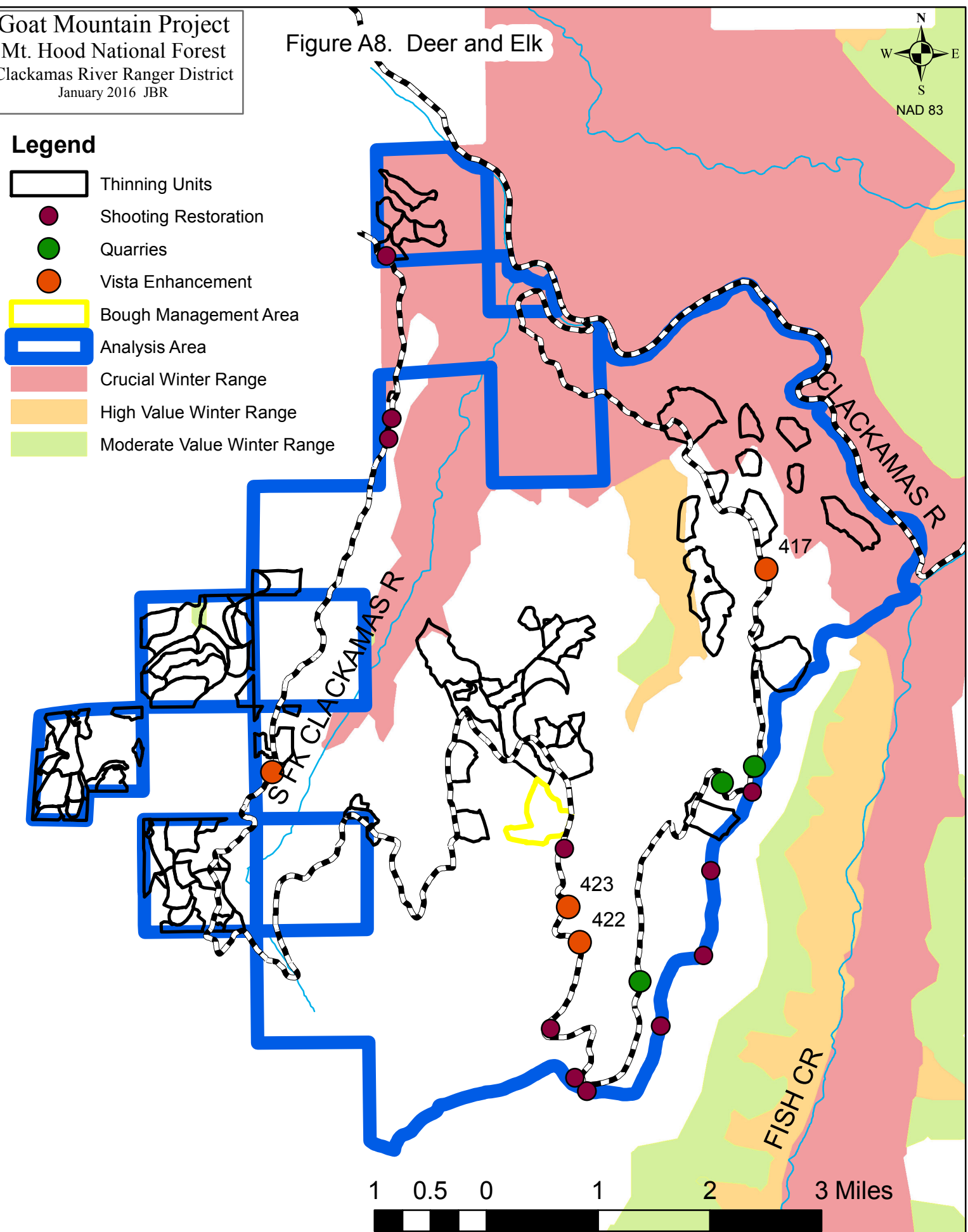


Figure A8. Deer and Elk



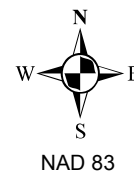
**Legend**

- Thinning Units
- Shooting Restoration
- Quarries
- Vista Enhancement
- Bough Management Area
- Analysis Area
- Crucial Winter Range
- High Value Winter Range
- Moderate Value Winter Range



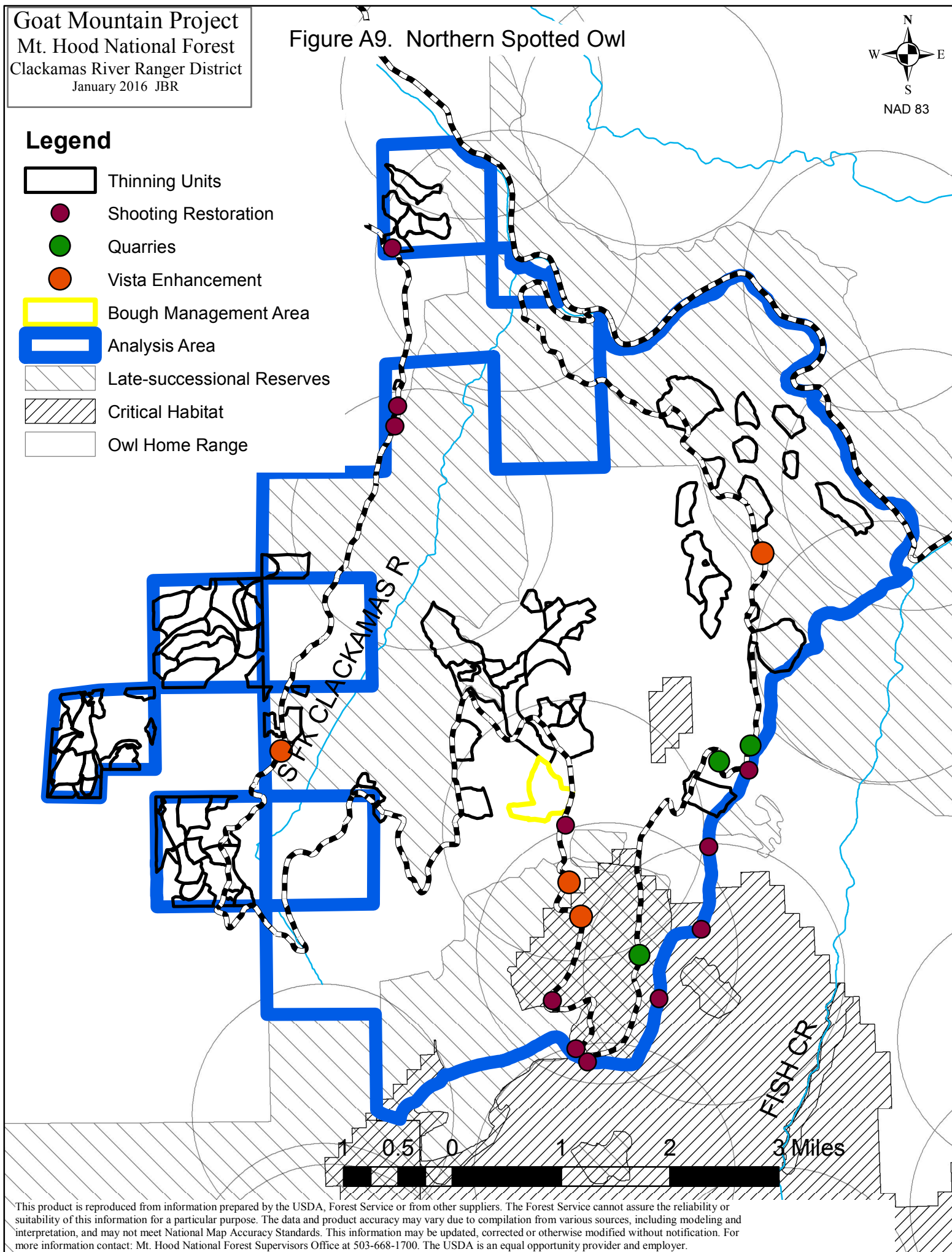
This product is reproduced from information prepared by the USDA, Forest Service or from other suppliers. The Forest Service cannot assure the reliability or suitability of this information for a particular purpose. The data and product accuracy may vary due to compilation from various sources, including modeling and interpretation, and may not meet National Map Accuracy Standards. This information may be updated, corrected or otherwise modified without notification. For more information contact: Mt. Hood National Forest Supervisors Office at 503-668-1700. The USDA is an equal opportunity provider and employer.

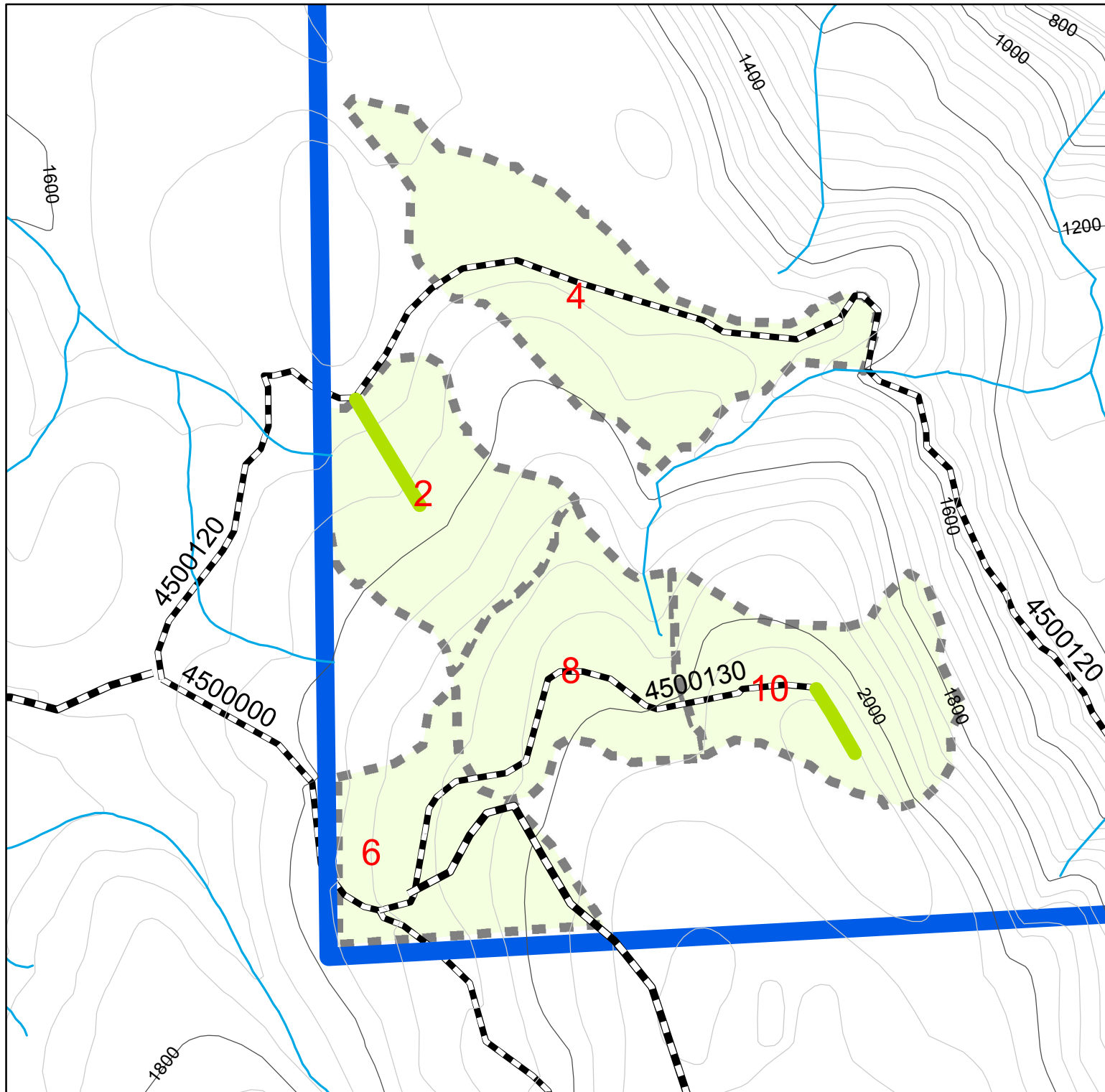
Figure A9. Northern Spotted Owl



## Legend

-  Thinning Units
-  Shooting Restoration
-  Quarries
-  Vista Enhancement
-  Bough Management Area
-  Analysis Area
-  Late-successional Reserves
-  Critical Habitat
-  Owl Home Range





## Legend


 Thinning Units

## Temporary Roads

 Existing Temporary Alignments

 Old Decommissioned Alignments

 New Temporary Roads

 Analysis Area

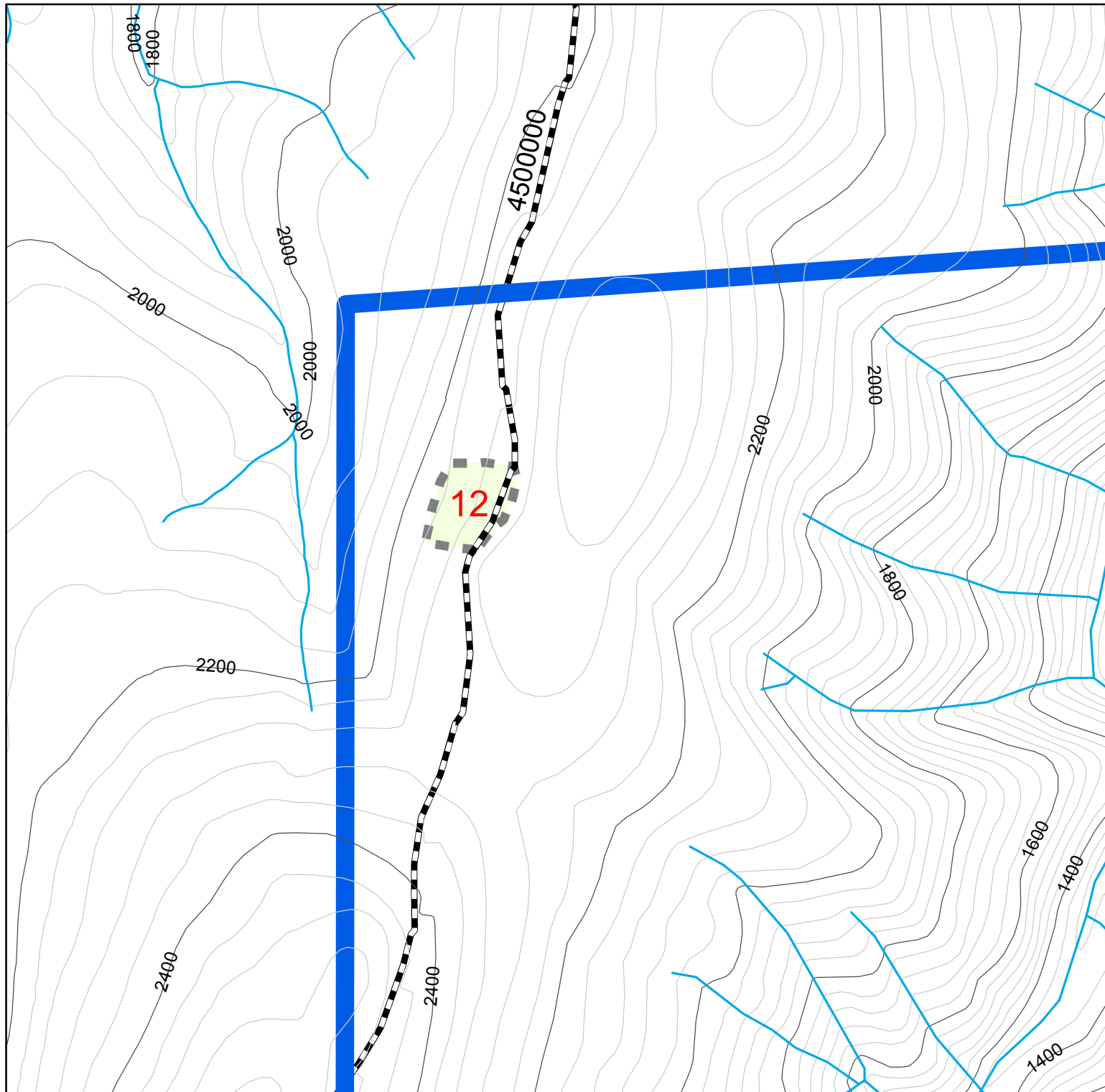
**Goat Mt. Units**

0 500 1,000 2,000 Feet



NAD 83









## Legend

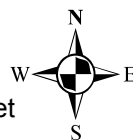
 Thinning Units

## Temporary Roads

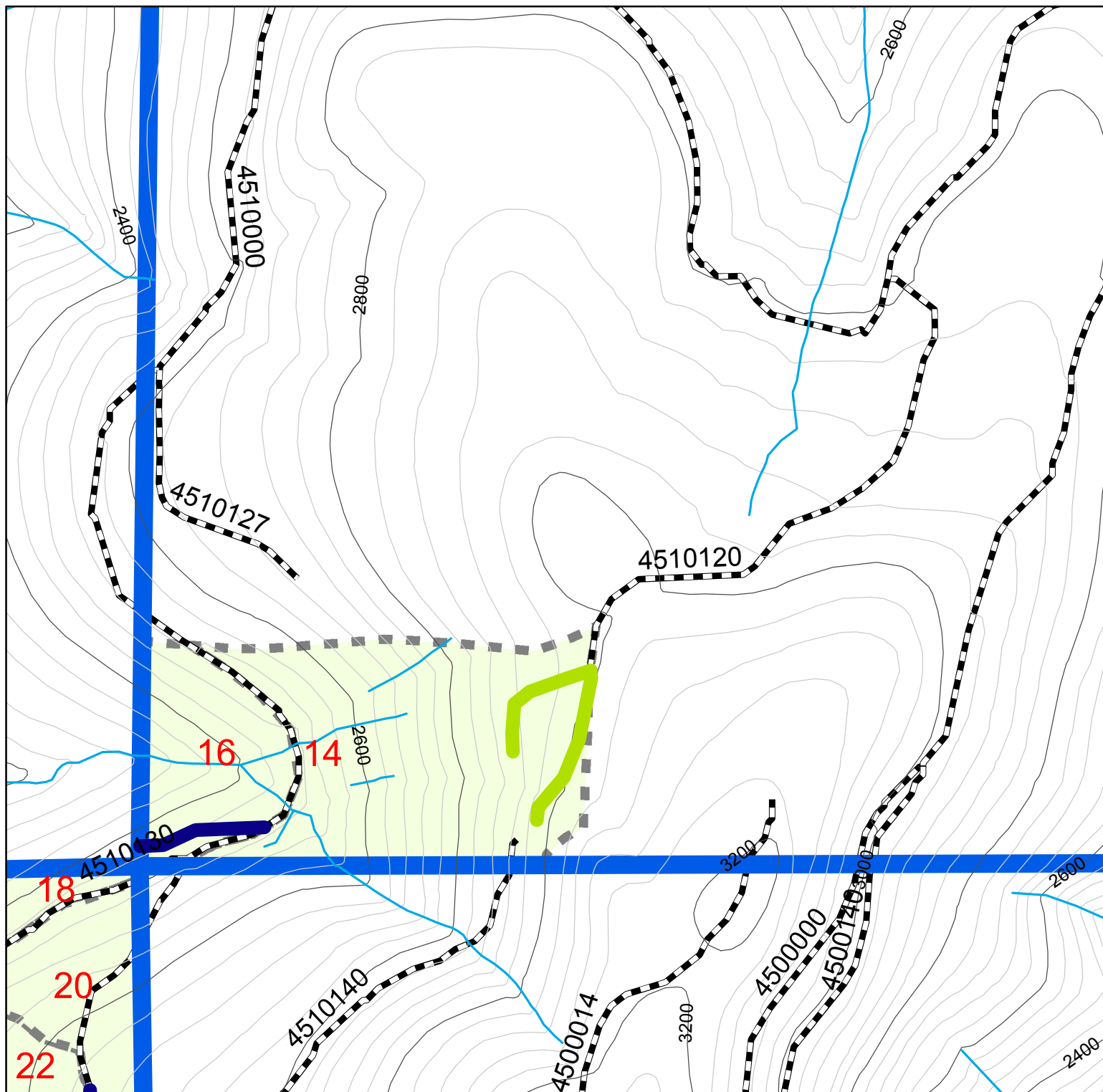
-  Existing Temporary Alignments
-  Old Decommissioned Alignments
-  New Temporary Roads
-  Analysis Area

**Goat Mt. Units**

0 500 1,000 2,000 Feet



NAD 83



## Legend


 Thinning Units

## Temporary Roads

 Existing Temporary Alignments

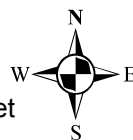
 Old Decommissioned Alignments

 New Temporary Roads

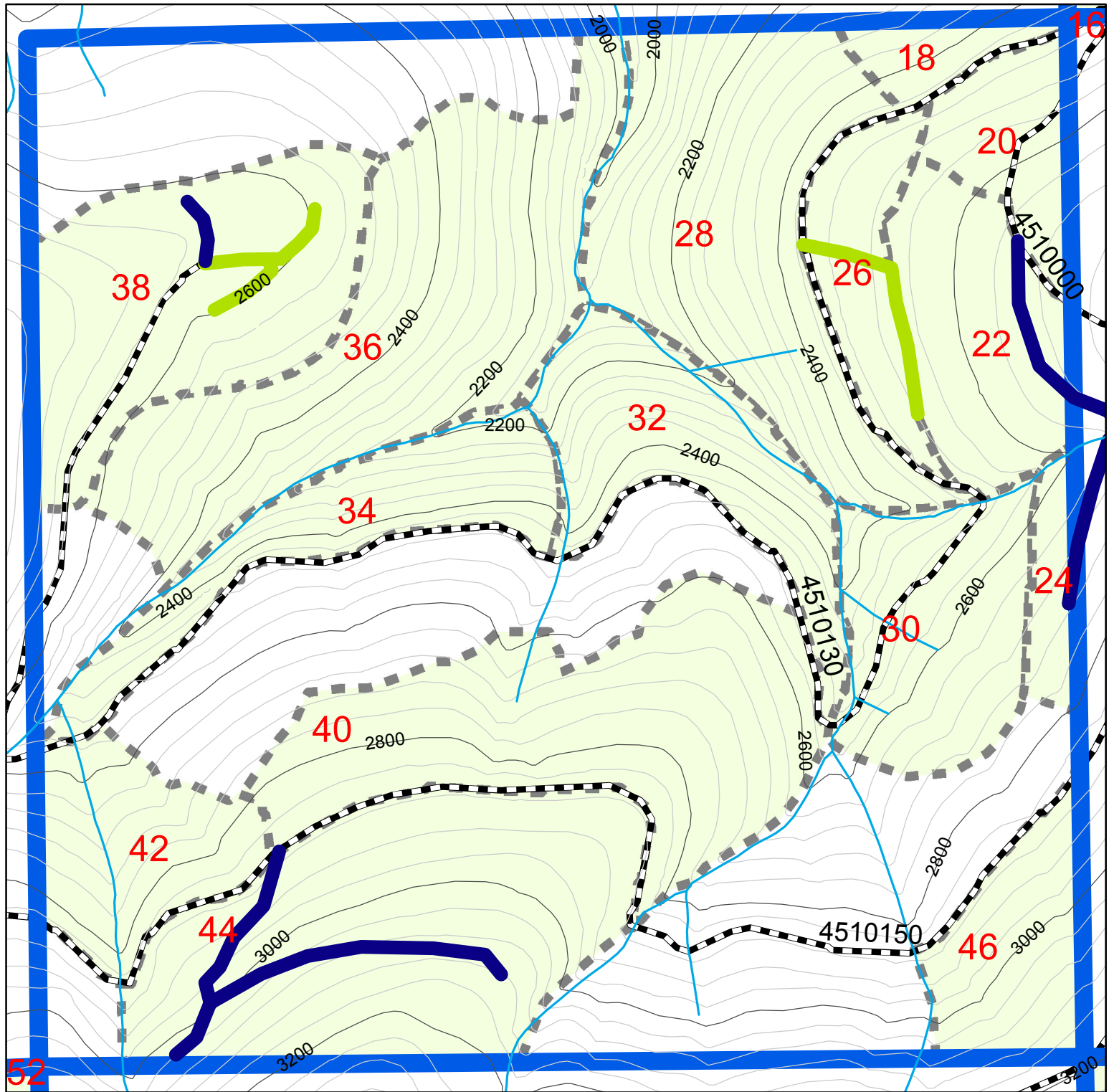
 Analysis Area

**Goat Mt. Units**

0 500 1,000 2,000 Feet







NAD 83



## Legend

 Thinning Units

## Temporary Roads

-  Existing Temporary Alignments
-  Old Decommissioned Alignments
-  New Temporary Roads
-  Analysis Area

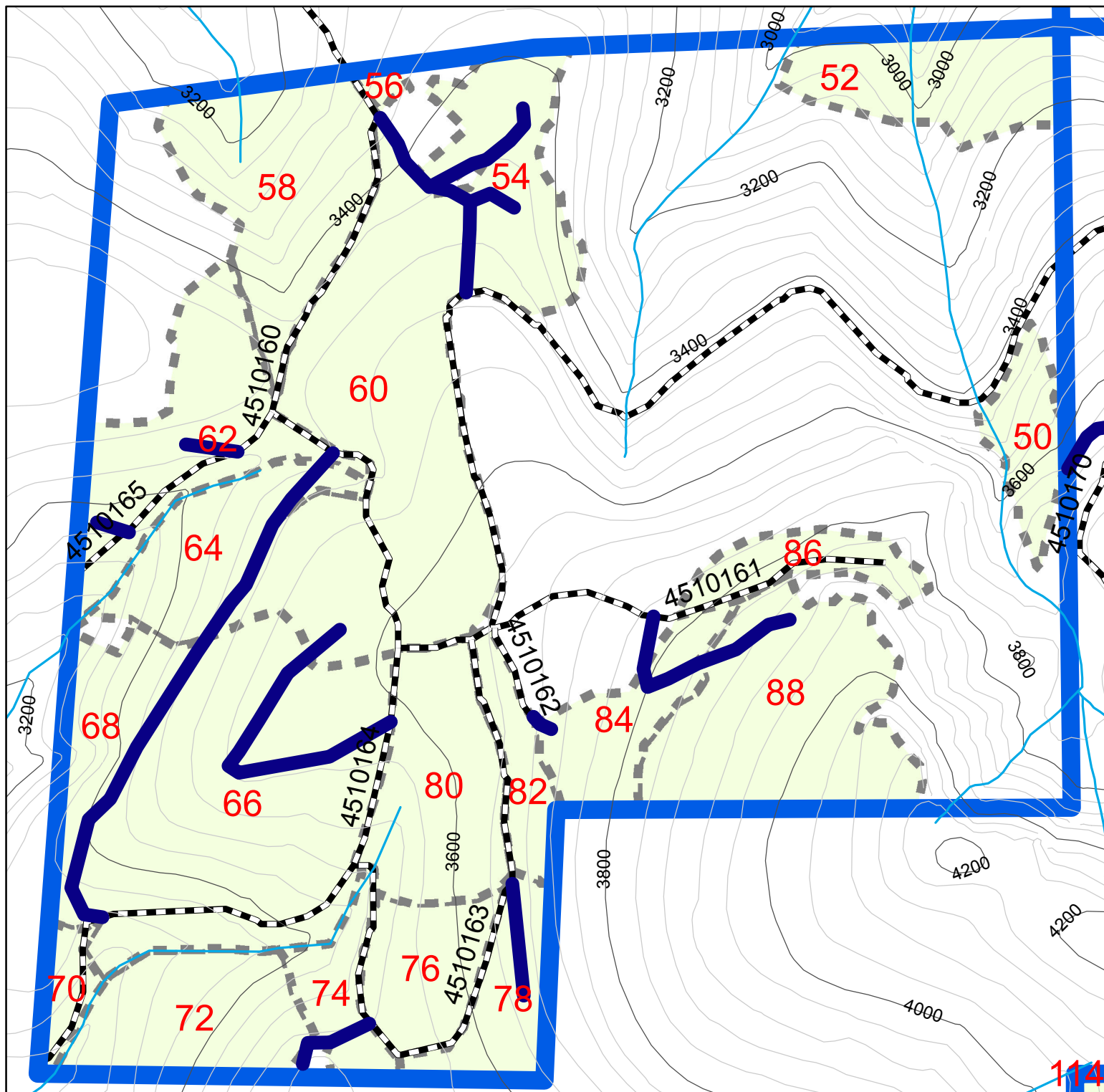
**Goat Mt. Units**

0 500 1,000 2,000 Feet



NAD 83









## Legend

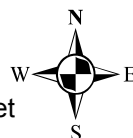
 Thinning Units

## Temporary Roads

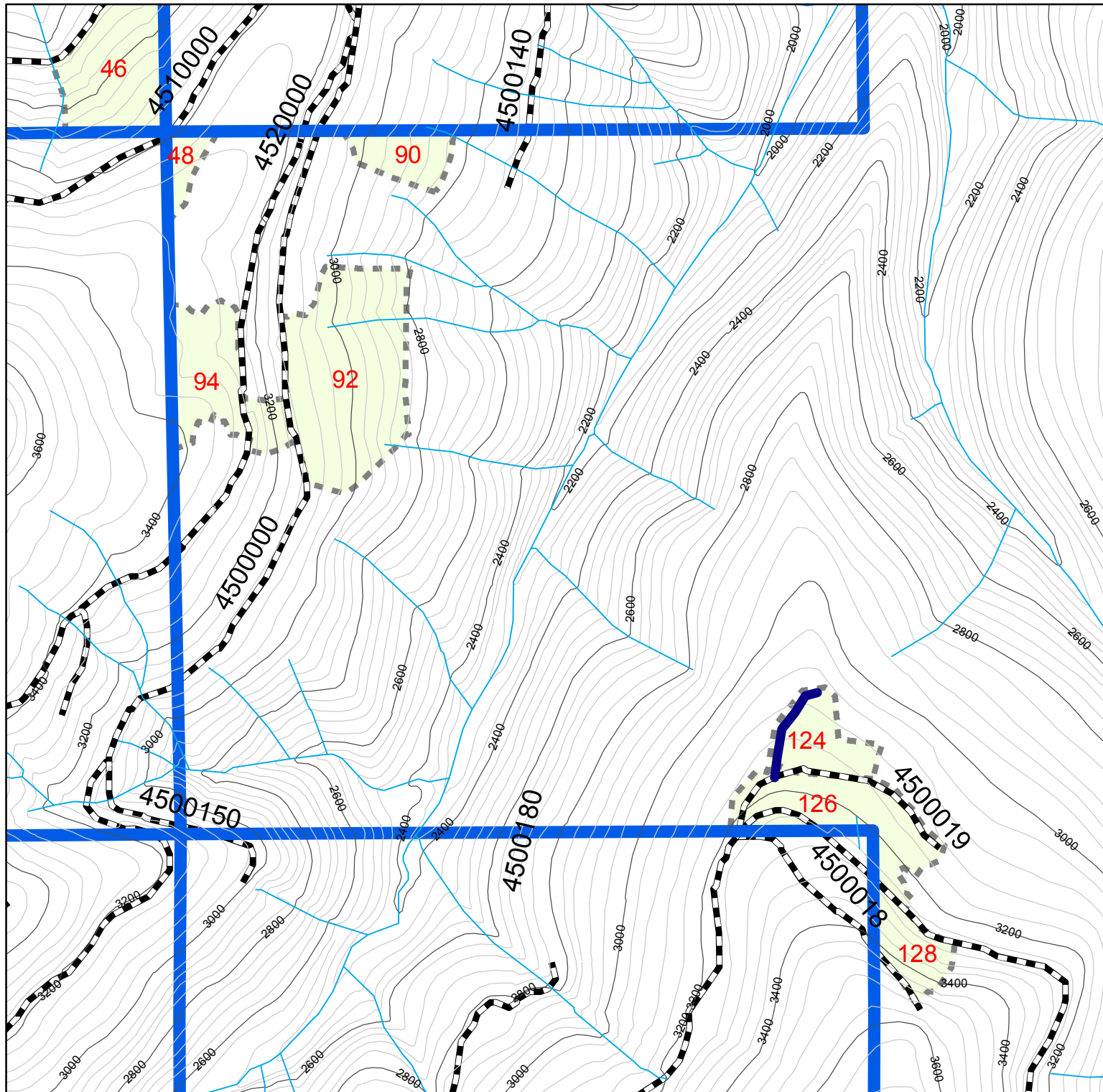
-  Existing Temporary Alignments
-  Old Decommissioned Alignments
-  New Temporary Roads
-  Analysis Area

**Goat Mt. Units**

0 500 1,000 2,000 Feet







NAD 83



## Legend

 Thinning Units

## Temporary Roads

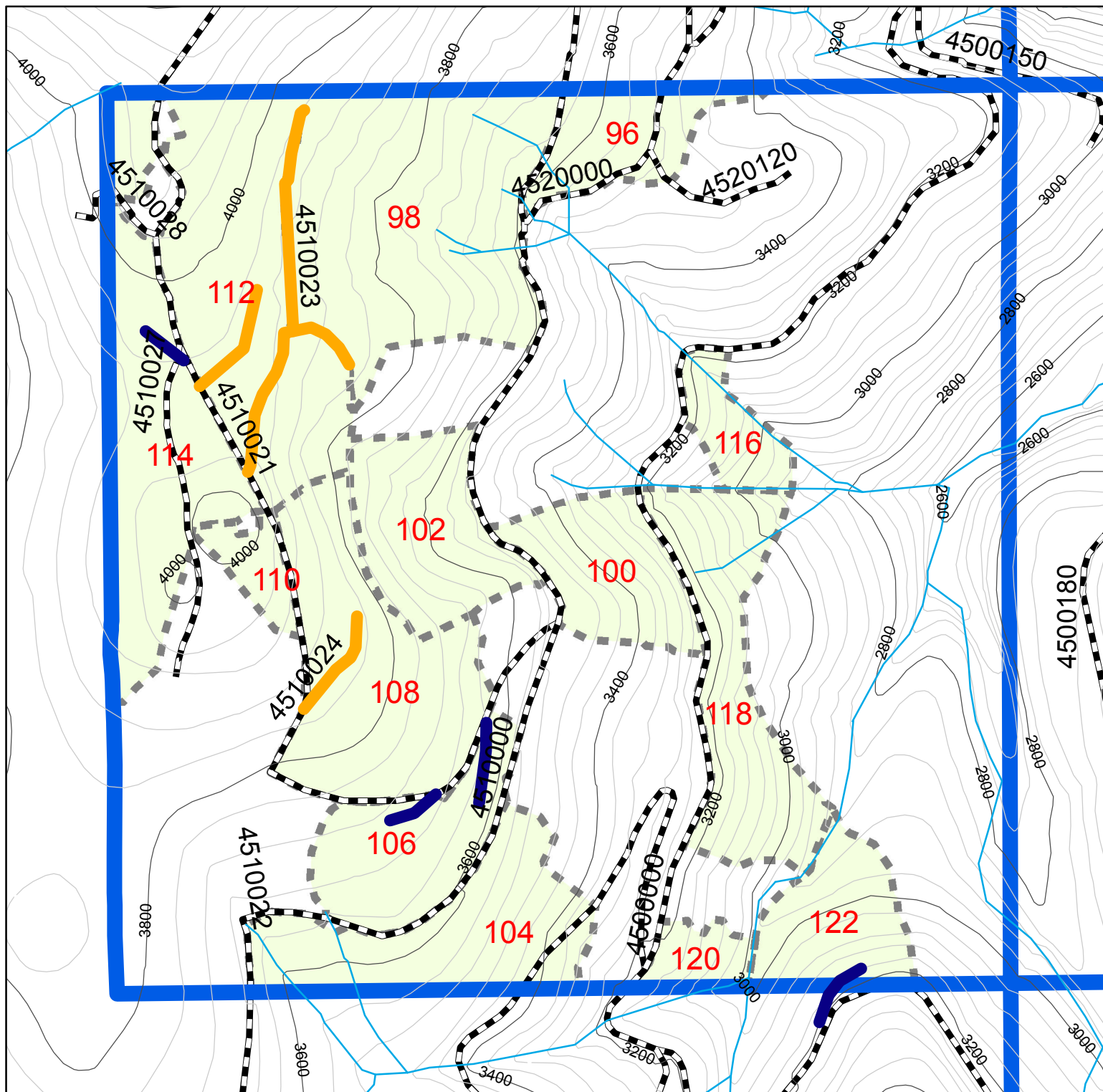
-  Existing Temporary Alignments
-  Old Decommissioned Alignments
-  New Temporary Roads
-  Analysis Area

**Goat Mt. Units**

0 500 1,000 2,000 3,000 Feet







NAD 83



## Legend

 Thinning Units

## Temporary Roads

-  Existing Temporary Alignments
-  Old Decommissioned Alignments
-  New Temporary Roads
-  Analysis Area

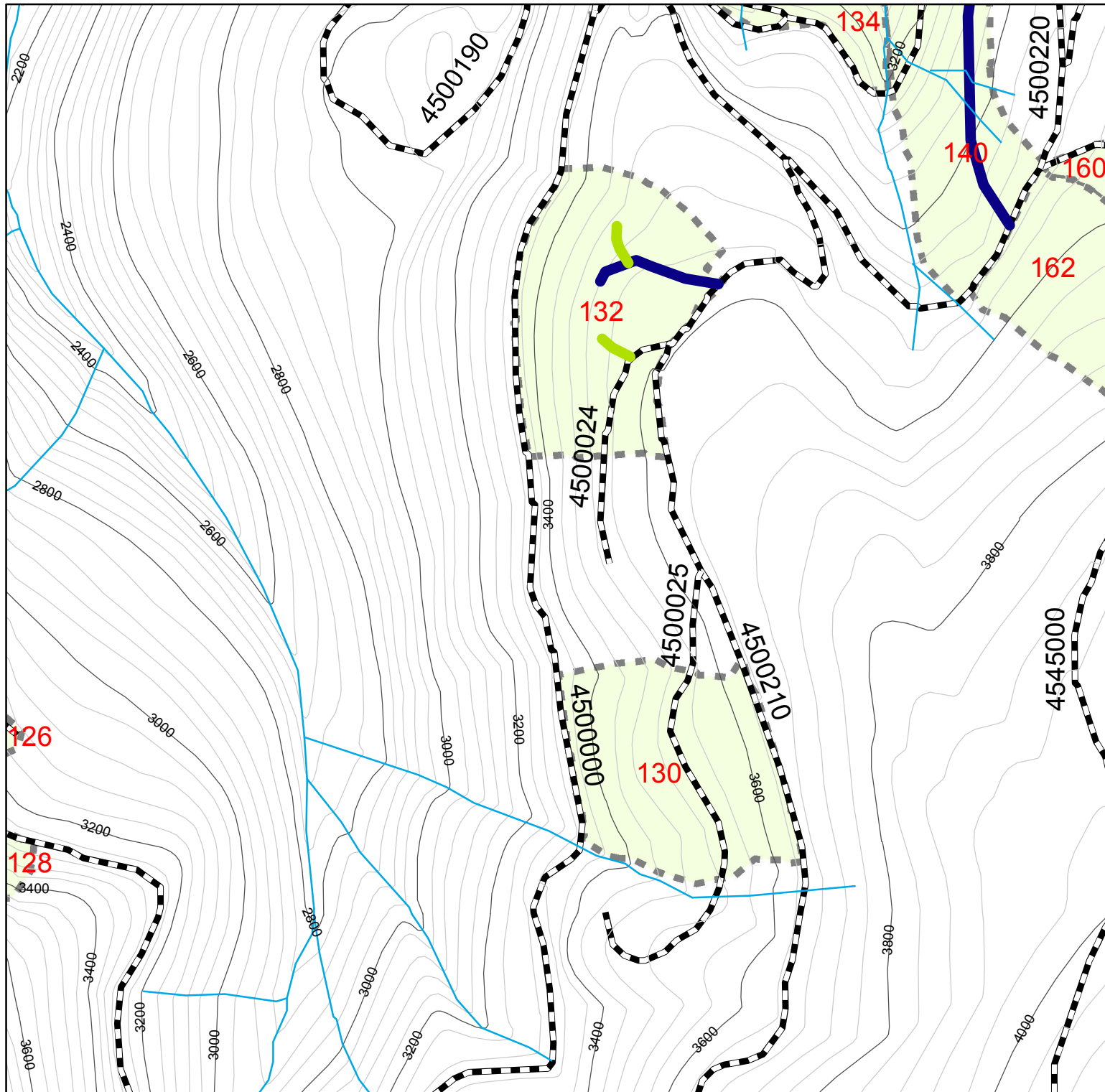
**Goat Mt. Units**

0 500 1,000 2,000 Feet



NAD 83





## Legend


 Thinning Units

## Temporary Roads

 Existing Temporary Alignments

 Old Decommissioned Alignments

 New Temporary Roads

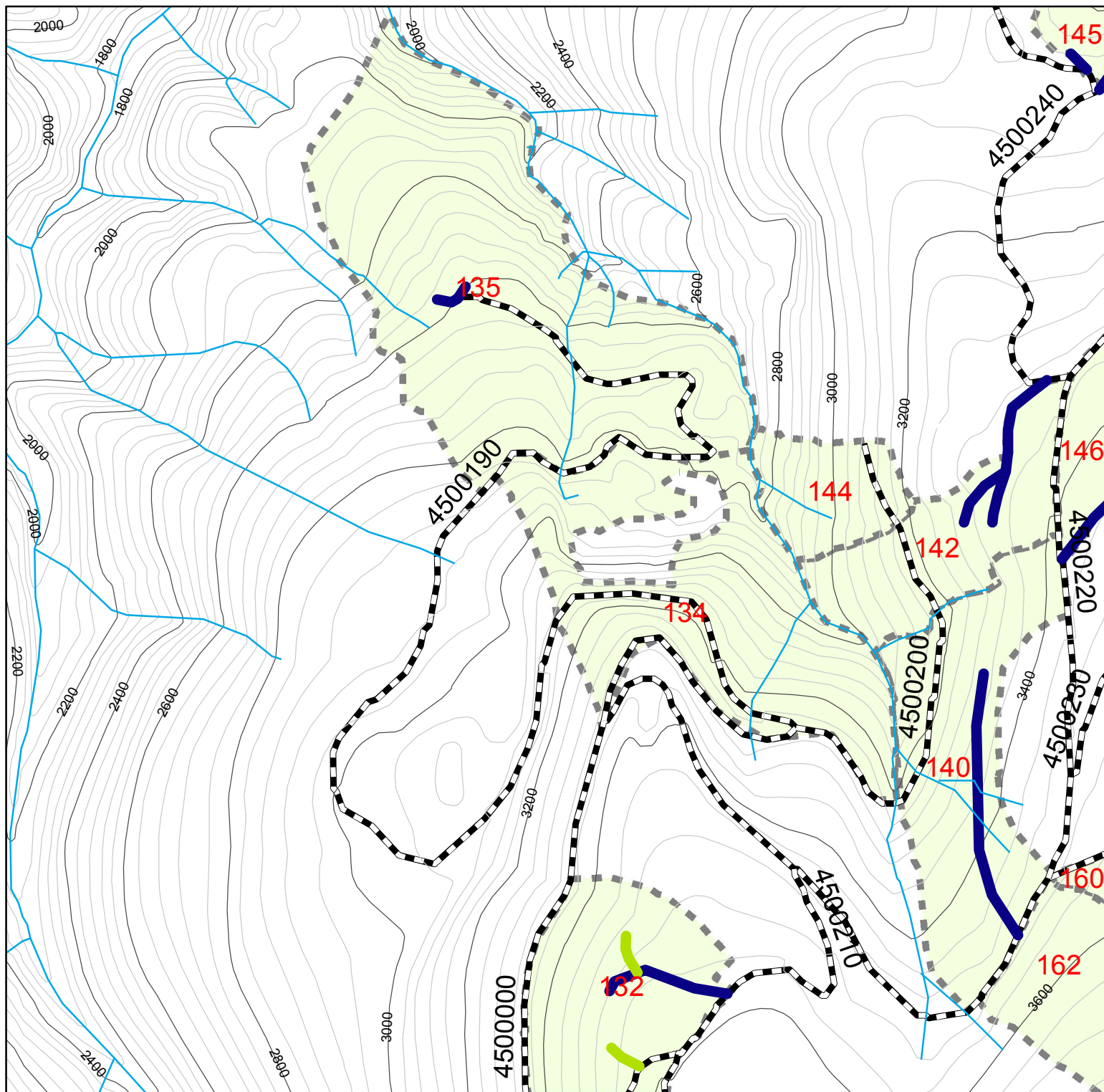
 Analysis Area

**Goat Mt. Units**

0 500 1,000 2,000 Feet







NAD 83



## Legend

 Thinning Units

## Temporary Roads

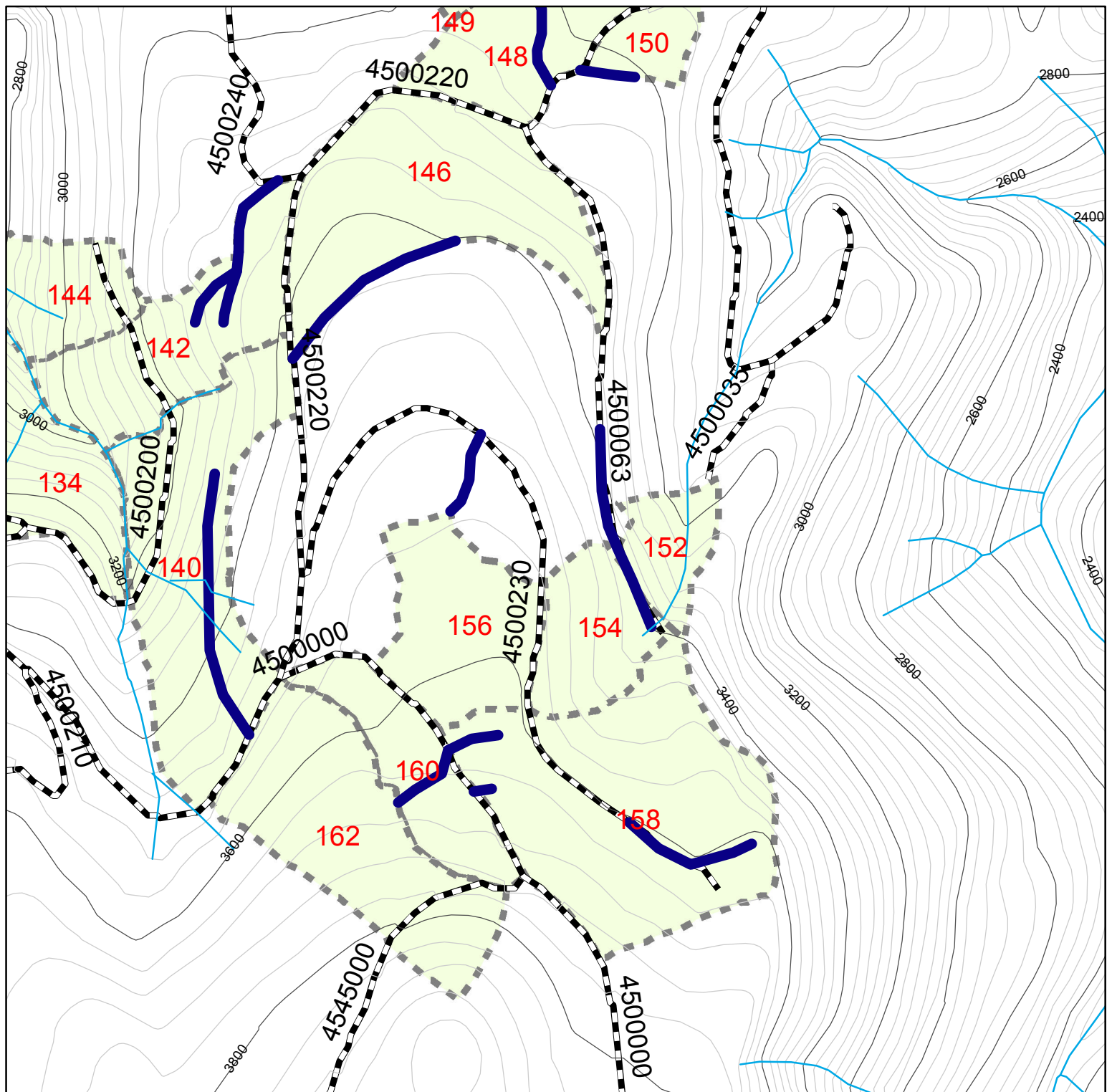
-  Existing Temporary Alignments
-  Old Decommissioned Alignments
-  New Temporary Roads
-  Analysis Area

**Goat Mt. Units**

0 500 1,000 2,000 Feet







NAD 83



## Legend

 Thinning Units

## Temporary Roads

-  Existing Temporary Alignments
-  Old Decommissioned Alignments
-  New Temporary Roads
-  Analysis Area

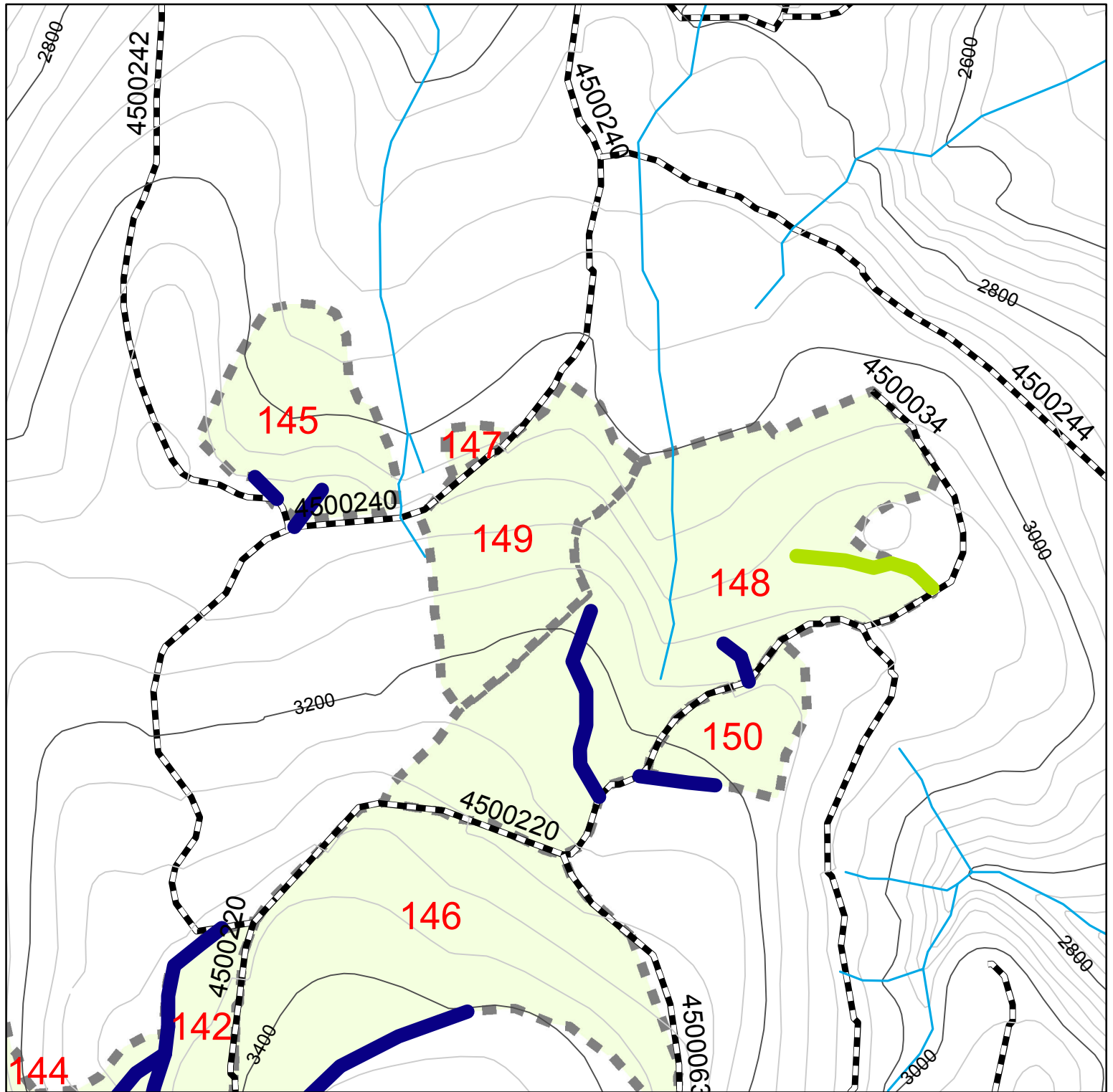
**Goat Mt. Units**

0 500 1,000 2,000 Feet



NAD 83





## Legend


 Thinning Units

## Temporary Roads

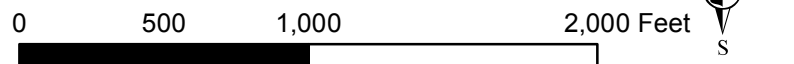
 Existing Temporary Alignments

 Old Decommissioned Alignments

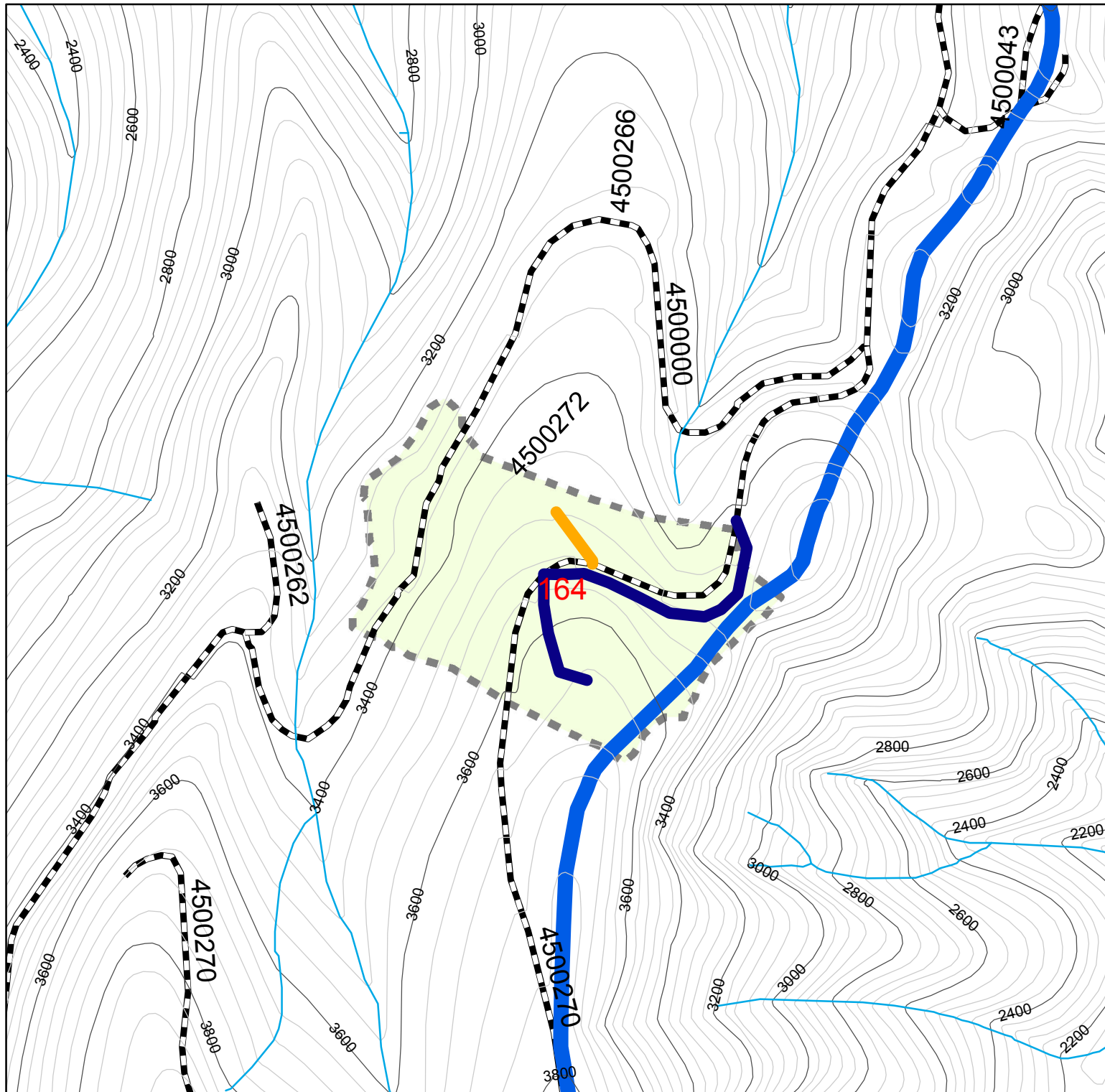
 New Temporary Roads

 Analysis Area

**Goat Mt. Units**







NAD 83



## Legend

 Thinning Units

## Temporary Roads

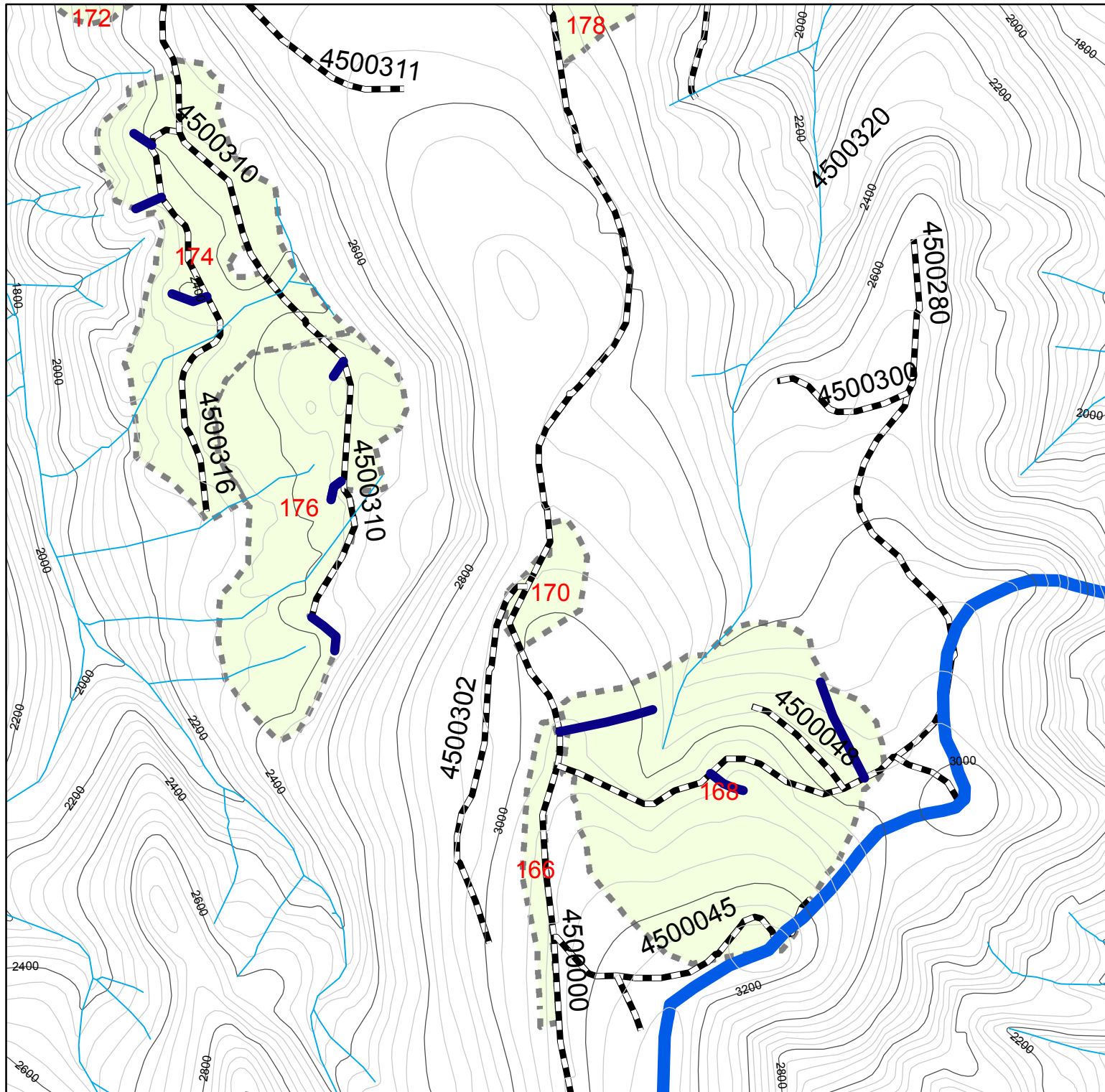
-  Existing Temporary Alignments
-  Old Decommissioned Alignments
-  New Temporary Roads
-  Analysis Area

**Goat Mt. Units**

0 500 1,000 2,000 Feet







NAD 83



## Legend

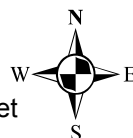
 Thinning Units

## Temporary Roads

-  Existing Temporary Alignments
-  Old Decommissioned Alignments
-  New Temporary Roads
-  Analysis Area

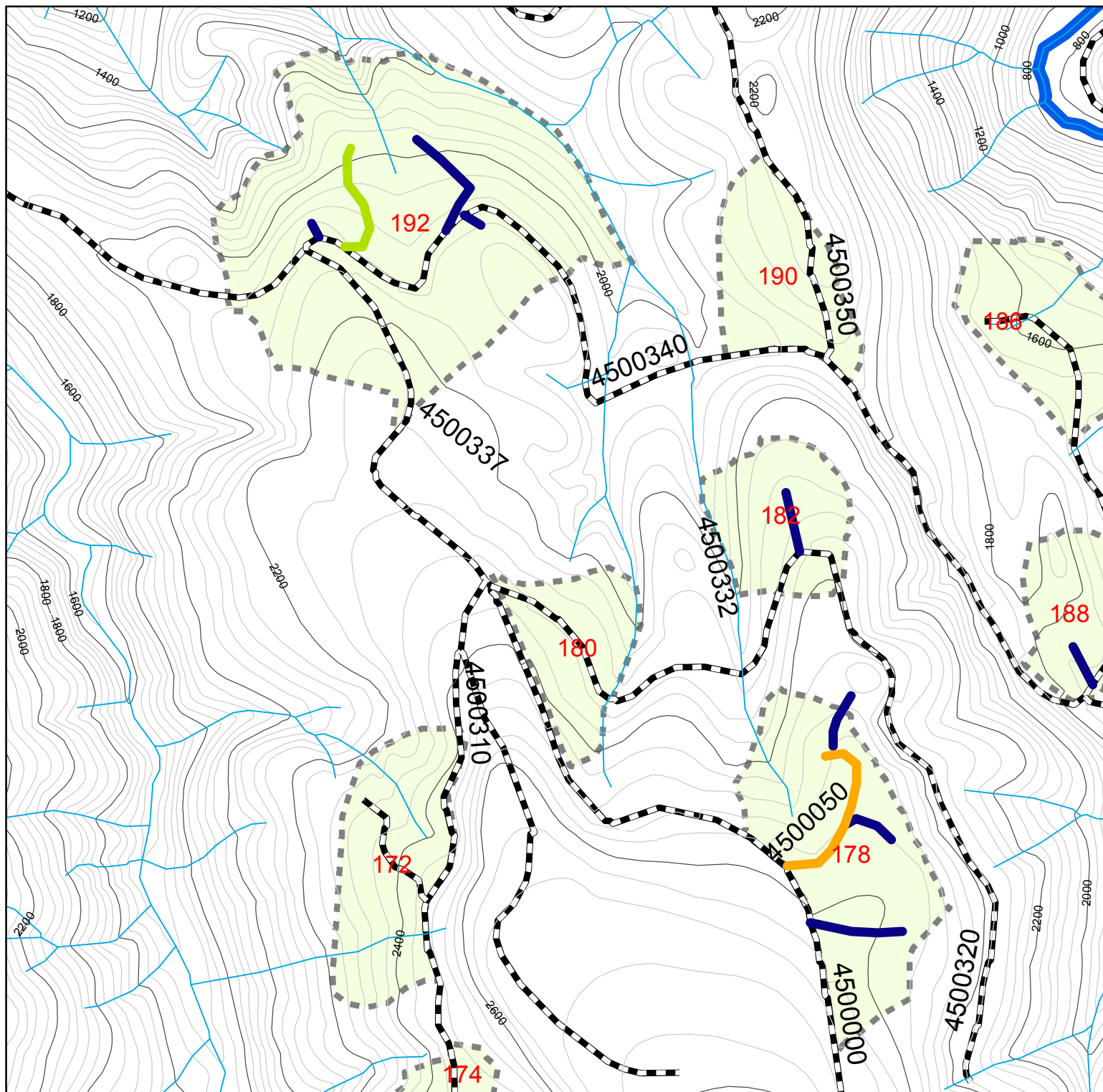
**Goat Mt. Units**

0 500 1,000 2,000 3,000 Feet



NAD 83





## Legend


 Thinning Units

## Temporary Roads

 Existing Temporary Alignments

 Old Decommissioned Alignments

 New Temporary Roads

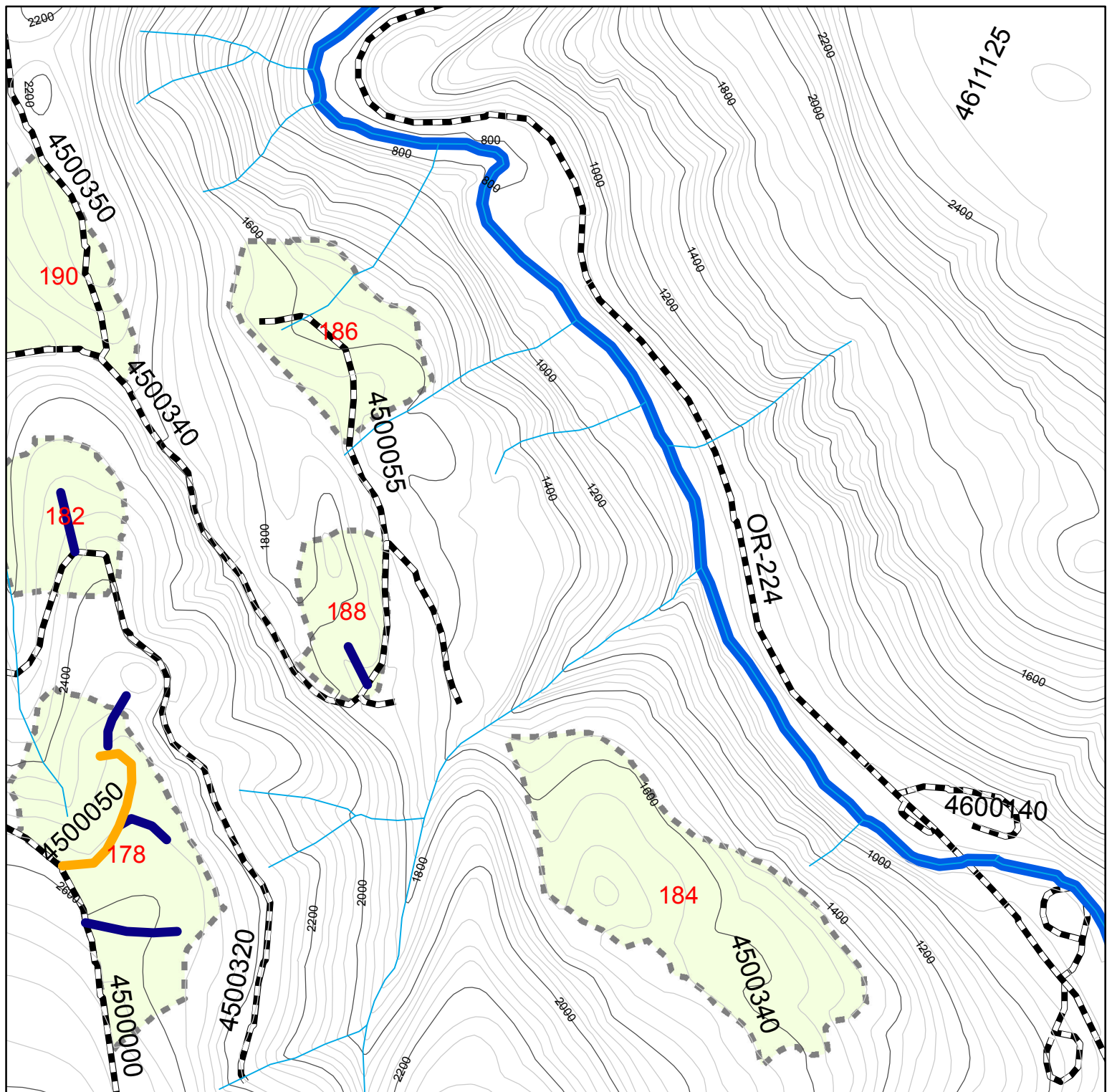
 Analysis Area

## Goat Mt. Units

0 500 1,000 2,000 3,000 Feet







NAD 83



## Legend

 Thinning Units

## Temporary Roads

-  Existing Temporary Alignments
-  Old Decommissioned Alignments
-  New Temporary Roads
-  Analysis Area

**Goat Mt. Units**

0 500 1,000 2,000 3,000 Feet



NAD 83