

SHELL THIN SALE AREA MAP/ SLASH DISPOSAL MAP
CLACKAMAS RIVER RANGER DISTRICT MT. HOOD NATIONAL FOREST

PAYMENT UNIT	Harvest Method Specified BT6.42	INDIVIDUAL TREE DESIGNATION CT2.35# (OPTION1) DESIGNATION BY DESCRIPTION	
		DESIGNATED SPECIES	SPACING (FEET)
54	Skyline	Douglas-fir, western hemlock	14
56	Ground-Based/ Skyline	Douglas-fir, western hemlock	14
57	Ground-Based	Douglas-fir, western hemlock	13
58	Ground-Based/ Skyline	Douglas-fir	14
60	Ground-Based	Douglas-fir	14
62	Ground-Based	Douglas-fir, grand fir, Pacific silver fir, noble fir	15
64	Ground-Based/ Skyline	Douglas-fir, western hemlock	13
68	Ground-Based	Douglas-fir, western hemlock	14
70	Ground-Based	Douglas-fir, western hemlock, grand fir, Pacific silver fir, noble fir	14
74	Ground-Based	Douglas-fir, western hemlock	14
78	Ground-Based	Douglas-fir, western hemlock, grand fir, Pacific silver fir, noble fir	13
82	Ground-Based	Douglas-fir, western hemlock, grand fir, Pacific silver fir, noble fir	13
84	Skyline	Douglas-fir, western hemlock	13

SHEET 1 of 2

LEGEND

- ▬ Sale Area Boundary, BT1.1.
- ① Payment & Cutting Unit and Number, BT1.1, BT5.2
- Gap Center, CT2.35# (Option1)
- Heavy Thin Center, CT2.35# (Option1)
- ⊗ Skip Center, CT2.35# (Option1)
- Existing Road, BT5.12
- R Hauling restricted, CT5.12#
- KO Keep Road Open, BT6.22
- A Public use restriction, CT5.12#
- RCC Specified Road Reconstruction, AT7, BT5.2
- U Unsuitable for use prior to Reconstruction, CT5.12#
- W Water Source, CT5.31#
- Protect Streamcourse, BT6.5, CT5.1# (Option1), CT6.41#
- Protect Improvements- Gate, BT6.22
- PI Protect Improvements - Sign, BT6.22
- ▲ Protect Improvements - Campground, BT6.22

NOTES

Payment unit boundaries are designated on the ground with blue "Partial Cut" boundary tags and marked with Orange tracer paint, unless designated by an existing road, BT1.1.

All landing slash shall be piled, CT6.74#.

Construction of temporary roads shall be in accordance with criteria shown in CT5.1 (Option 1).

All landings and temporary roads shall be scarified, CT5.1 (Option 1), CT6.6#.

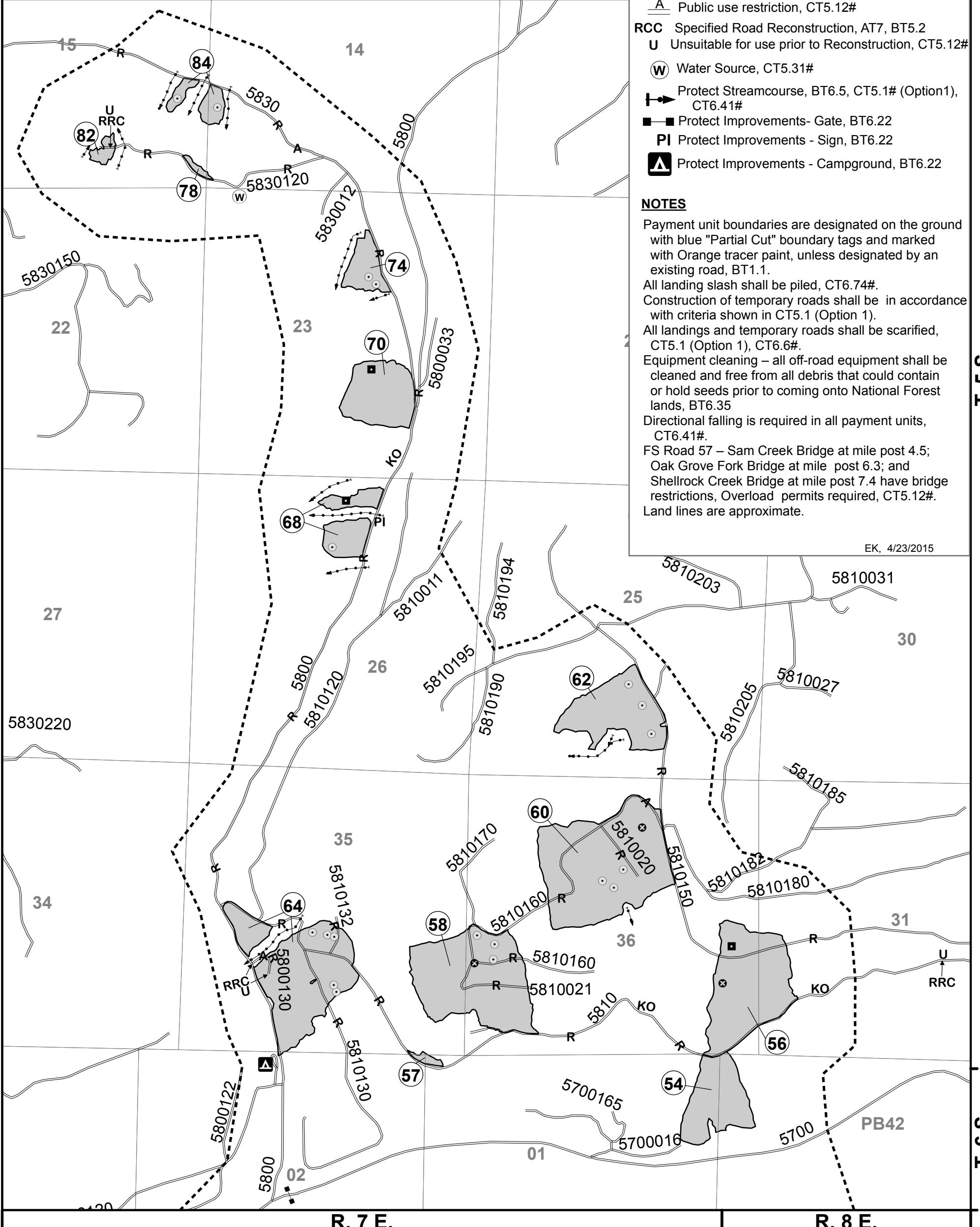
Equipment cleaning – all off-road equipment shall be cleaned and free from all debris that could contain or hold seeds prior to coming onto National Forest lands, BT6.35

Directional falling is required in all payment units, CT6.41#.

FS Road 57 – Sam Creek Bridge at mile post 4.5; Oak Grove Fork Bridge at mile post 6.3; and Shellrock Creek Bridge at mile post 7.4 have bridge restrictions, Overload permits required, CT5.12#.

Land lines are approximate.

EK, 4/23/2015



T. 5 S.

T. 6 S.

R. 7 E.

R. 8 E.

SHELL THIN SALE AREA MAP/ SLASH DISPOSAL MAP
CLACKAMAS RIVER RANGER DISTRICT MT. HOOD NATIONAL FOREST

SHEET 2 of 2

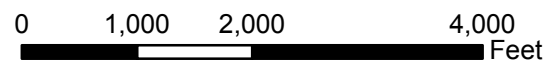
LEGEND

- Sale Area Boundary, BT1.1.
- Payment & Cutting Unit and Number, BT1.1, BT5.2
- Gap Center, CT2.35# (Option1)
- Heavy Thin Center, CT2.35# (Option1)
- Existing Road, BT5.12
- Hauling restricted, CT5.12#
- Keep Road Open, BT6.22
- Protect Streamcourse, BT6.5, CT5.1# (Option1), CT6.41#
- Protect Improvements- Gate, BT6.22

NOTES

Payment unit boundaries are designated on the ground with blue "Partial Cut" boundary tags and marked with Orange tracer paint, unless designated by an existing road, BT1.1.
 All landing slash shall be piled, CT6.74#.
 Construction of temporary roads shall be in accordance with criteria shown in CT5.1 (Option 1).
 All landings and temporary roads shall be scarified, CT5.1 (Option 1), CT6.6#.
 Equipment cleaning – all off-road equipment shall be cleaned and free from all debris that could contain or hold seeds prior to coming onto National Forest lands, BT6.35
 Directional falling is required in all payment units, CT6.41#.
 FS Road 57 – Sam Creek Bridge at mile post 4.5; Oak Grove Fork Bridge at mile post 6.3; and Shellrock Creek Bridge at mile post 7.4 have bridge restrictions, Overload permits required, CT5.12#.
 Land lines are approximate.

PAYMENT UNIT	Harvest Method Specified BT6.42	INDIVIDUAL TREE DISGNATION CT2.35# (OPTION1) DESIGNATION BY DESCRIPTION	
		DESIGNATED SPECIES	SPACING (FEET)
42	Ground-Based	Douglas-fir, western hemlock	14
44	Ground-Based/ Skyline	Douglas-fir, western hemlock	13
46	Ground-Based	Douglas-fir, western hemlock	14
50	Ground-Based	Douglas-fir	13
52	Ground-Based	Douglas-fir	13



EK, 4/23/15

R. 7 E.

R. 8 E.

T. 6 S.