

Clear Dodger

EA OR 080 2003 003

Appendix F

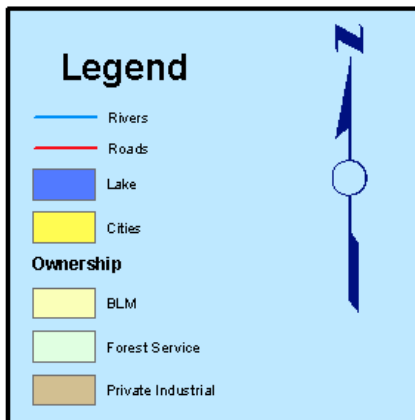
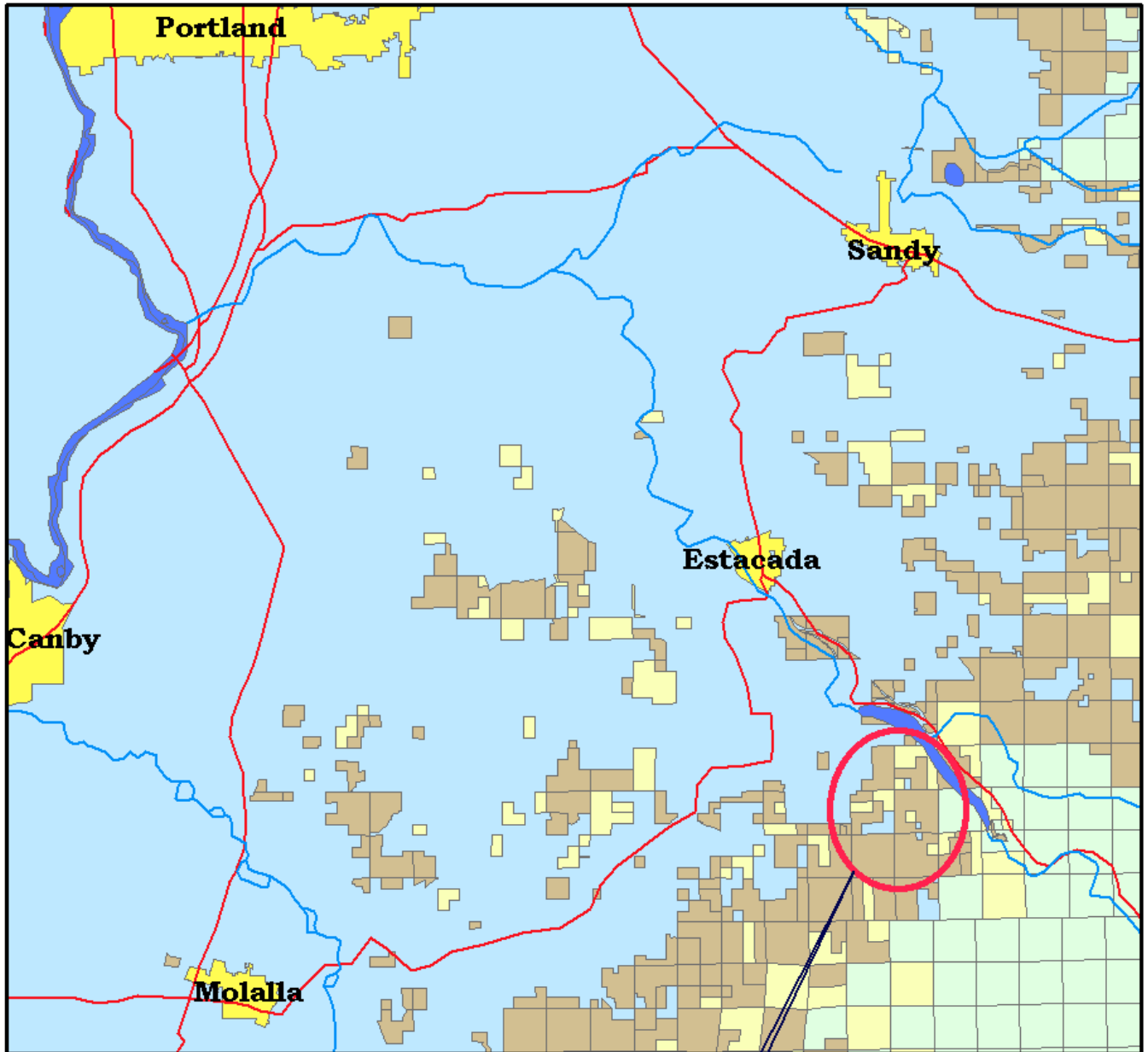
Maps¹

Map 1: General Location	2
Map 2: Age Class / Type	3
Map 3: Watershed / Riparian	4
Map 4: 5 th & 6 th Field Watersheds.....	5

¹ Units from the Proposed Action are shown on Maps 2 and 3, with the unit numbers on Map 2.

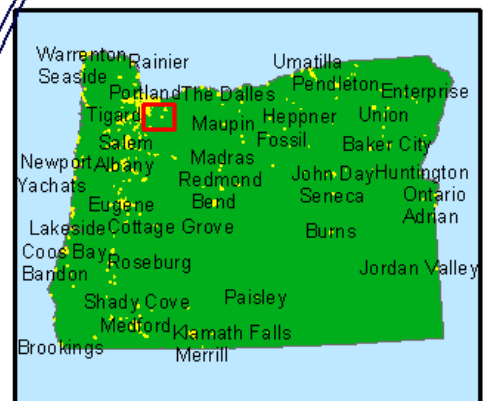
Clear Dodger

General Location Map



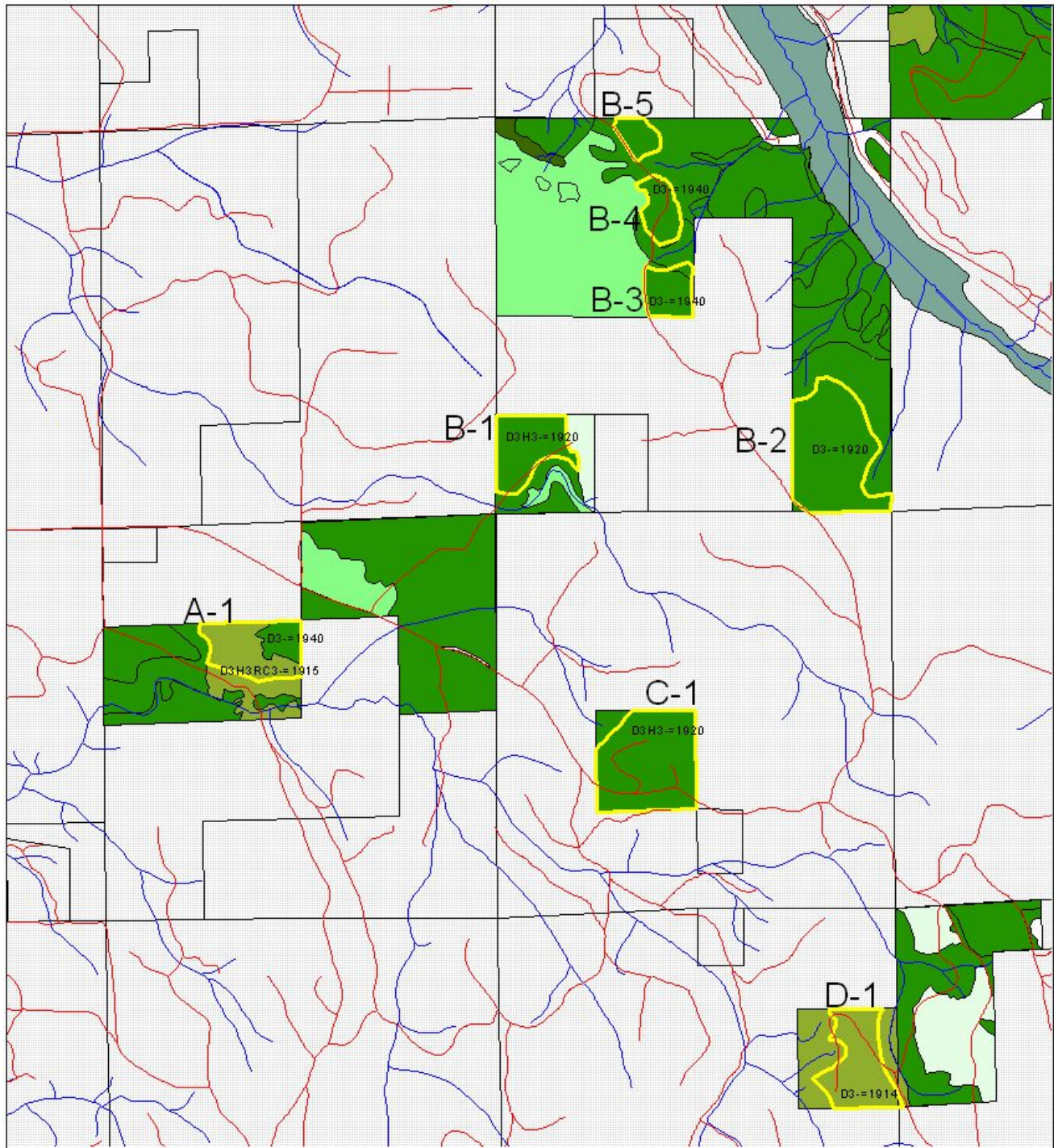
**Clear Dodger
Project Area**

RHerrin, August 2002
[W:\cas9\cast\imber\timber\clear\clear\dodge\LocationMap](http://w:\cas9\cast\imber\timber\clear\clear\dodge\LocationMap)



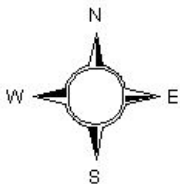
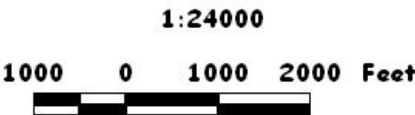
Clear Dodger

Age Class Map



Legend

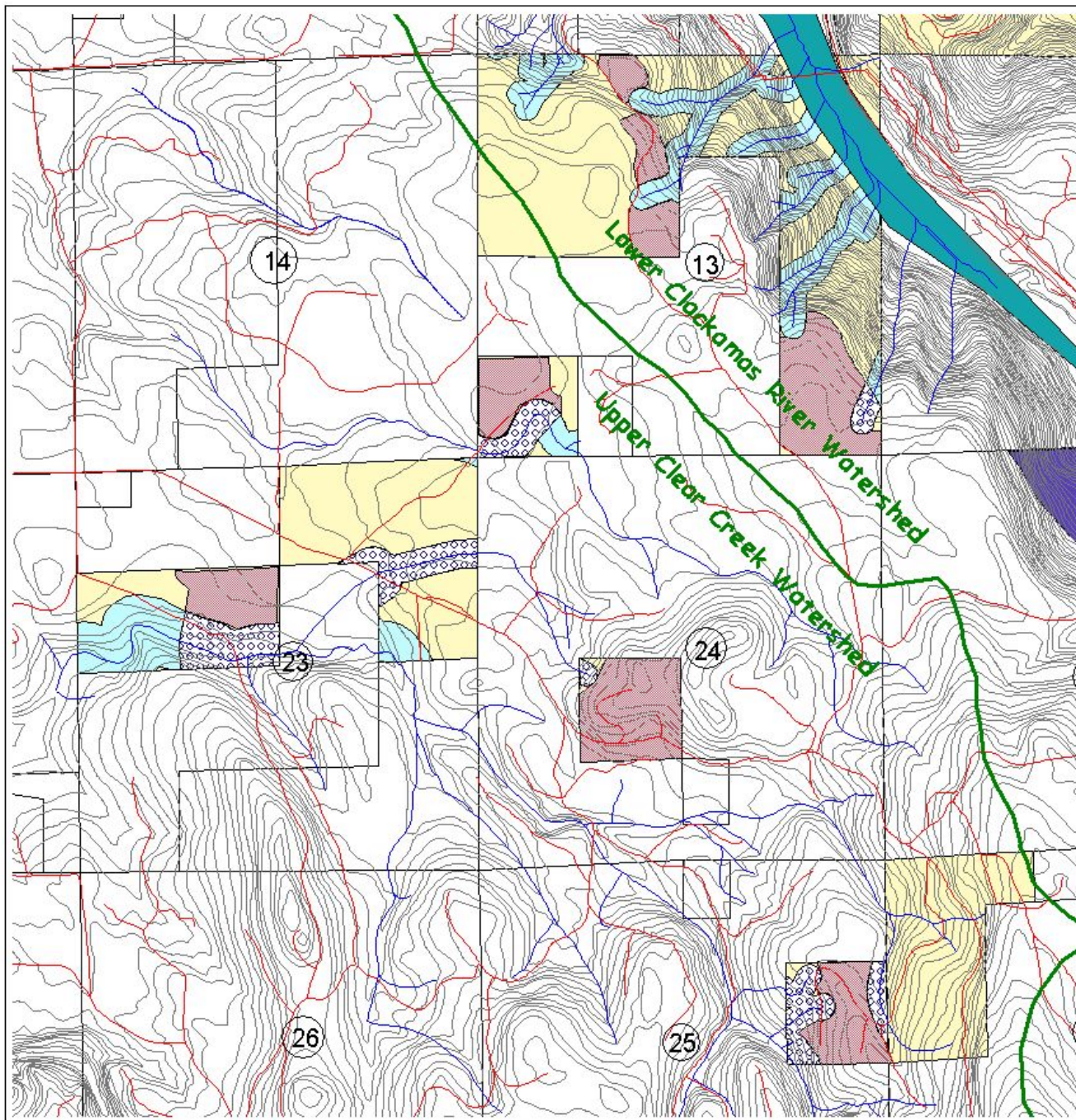
- Roads
- Streams
- Tsi
- Foi
- 0 - 10
- 11 - 40
- 41 - 80
- 81 - 120
- 121 - 500
- Lakes












RHerrin, February 2003

Clear Dodger

Watershed / Riparian Map



Legend

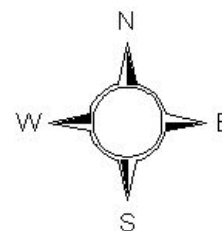
-  Watershed Boundary
-  Roads
-  Streams
-  20' Contour Lines
-  Riparian Treatments.shp
-  Lake
-  Riparian Reserves
-  Thinning Units
-  Key Watersheds
-  BLM Lands

T. 4 S., R. 4 E., WM

1000 0 1000 2000 Feet



1:24000



February, 2003
R. Herrin

N:\Cascades\NEPA Library\Cleard Dodger\watershed Riparian Map.jpg

