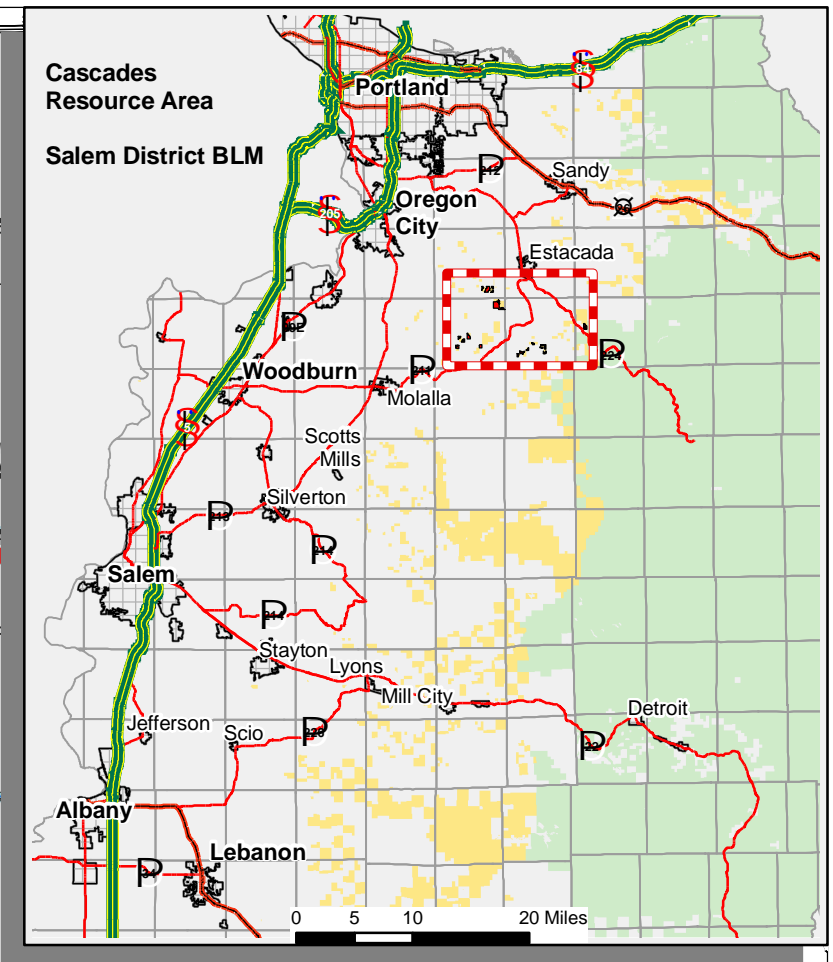
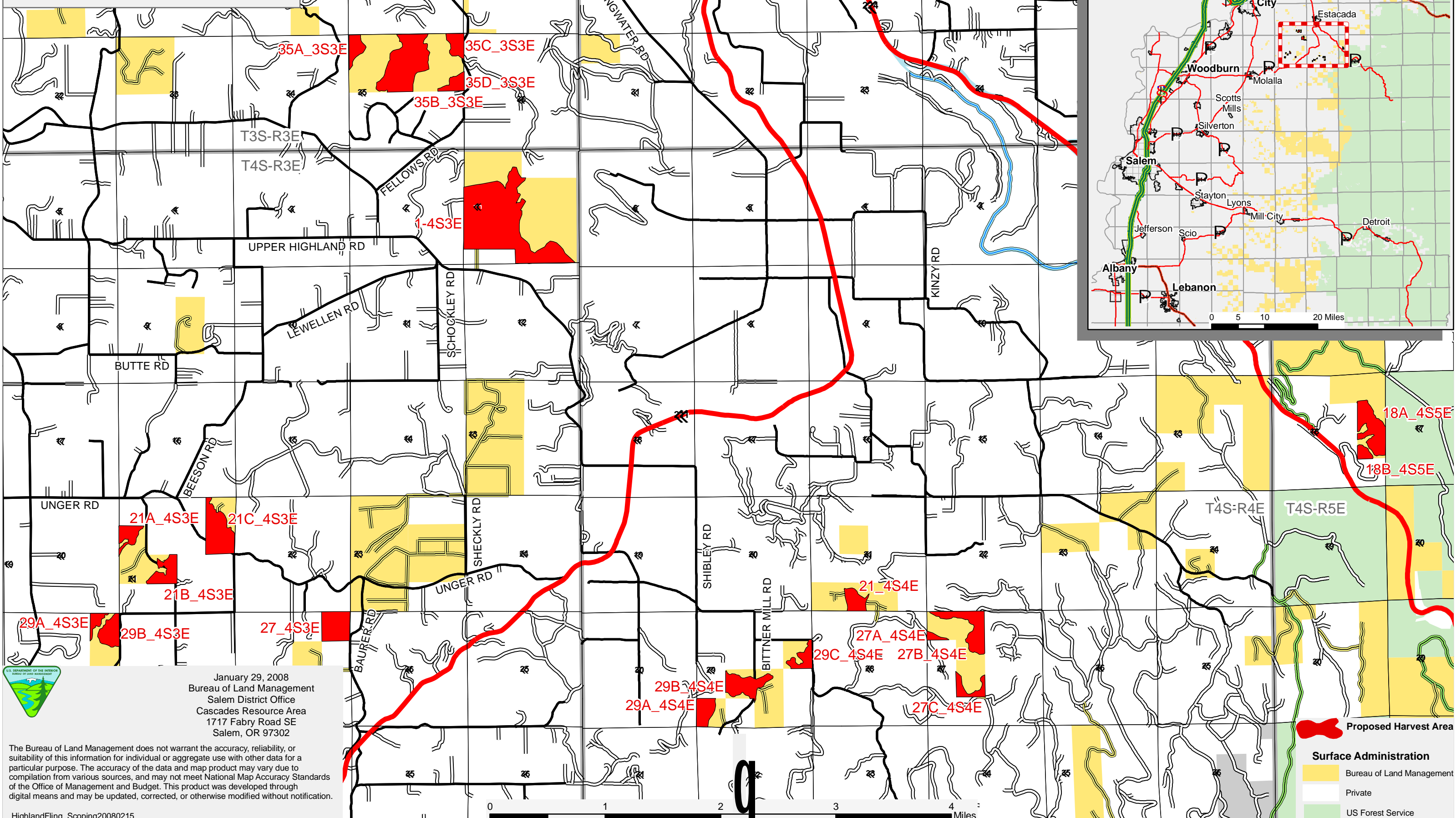


# Highland Fling Timber Harvest Proposal

T. 3 S., R. 3 E.; T. 4 S., R. 3 E.  
T. 4 S., R. 4 E.; T. 4 S., R. 5 E.



January 29, 2008  
Bureau of Land Management  
Salem District Office  
Cascades Resource Area  
1717 Fabry Road SE  
Salem, OR 97302

The Bureau of Land Management does not warrant the accuracy, reliability, or suitability of this information for individual or aggregate use with other data for a particular purpose. The accuracy of the data and map product may vary due to compilation from various sources, and may not meet National Map Accuracy Standards of the Office of Management and Budget. This product was developed through digital means and may be updated, corrected, or otherwise modified without notification.

HighlandFling\_Scoping20080215

**Proposed Harvest Area**

**Surface Administration**

- Bureau of Land Management
- Private
- US Forest Service

