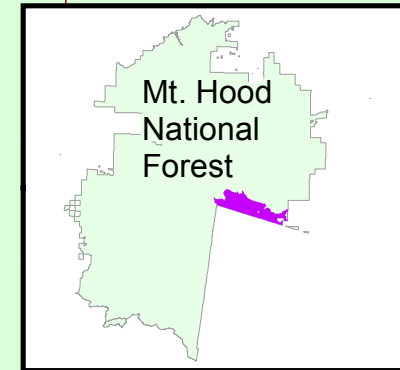


Zigzag Ranger District

APPENDIX 4 Map 1 Final Decision of Treatment Units by Vegetation Treatment Type



T3S

T4S

T5S

T6S

T3S

T4S

T5S

T6S

CCR Project Area	Dry Conifer
Treatment	Moist Conifer
Plantation	Ranger District
Non-Plantation	Administrative Forest
Sapling	Ownership
WUI	U.S. Forest Service
Juniper Flats	Bureau of Indian Affairs
	Bureau of Land Management
	State Land



This product is produced from information prepared by the USDA, Forest Service, or from other suppliers. The Forest Service can not assure the reliability or suitability of this information for a particular purpose. The data and product accuracy may vary due to compilation from various sources, including modeling and interpretation, and may not meet National Map Accuracy Standards. This information may be updated, corrected, or otherwise modified without notification. For more information contact: Mt. Hood National Forest Headquarters (503)668-1779. The USDA is an equal opportunity provider and employer.



26

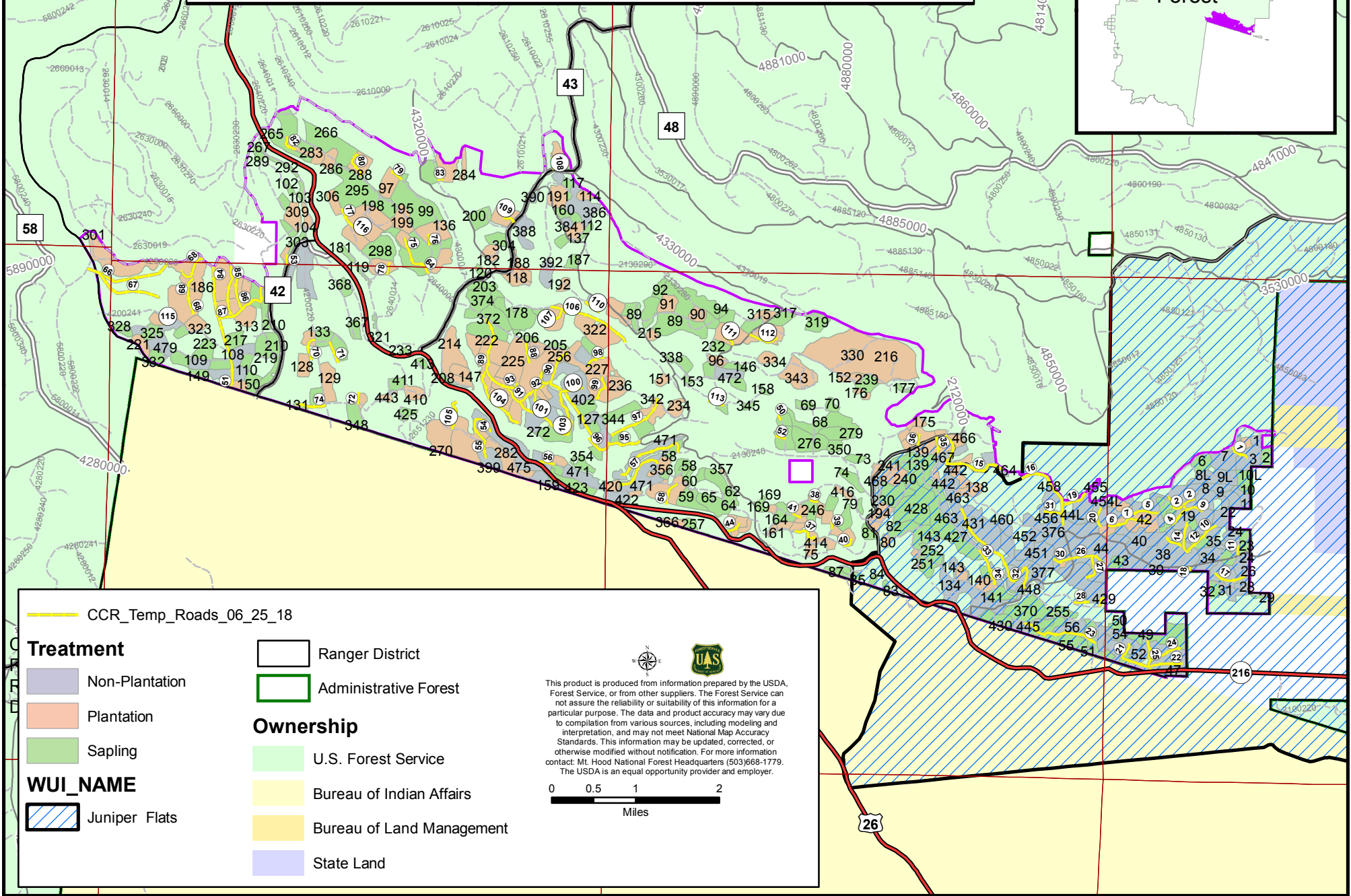
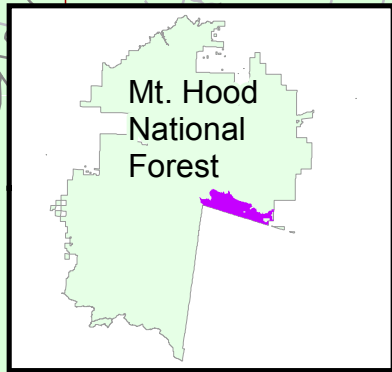
216

Zigzag Ranger District

Hood River Ranger District

Map 2

Final Decision of Temporary roads in the proposed action



CCR_Temp_Roads_06_25_18

Treatment

- Non-Plantation
- Plantation
- Sapling

WUI_NAME

- Juniper Flats

Ownership

- U.S. Forest Service
- Bureau of Indian Affairs
- Bureau of Land Management
- State Land

Ranger District

Administrative Forest

UAS

This product is produced from information prepared by the USDA, Forest Service, or from other suppliers. The Forest Service can not assure the reliability or suitability of this information for a particular purpose. The data and product accuracy may vary due to compilation from various sources, including modeling and interpretation, and may not meet National Map Accuracy Standards. This information may be updated, corrected, or otherwise modified without notification. For more information contact: Mt. Hood National Forest Headquarters (503)668-1779. The USDA is an equal opportunity provider and employer.

0 0.5 1 2 Miles