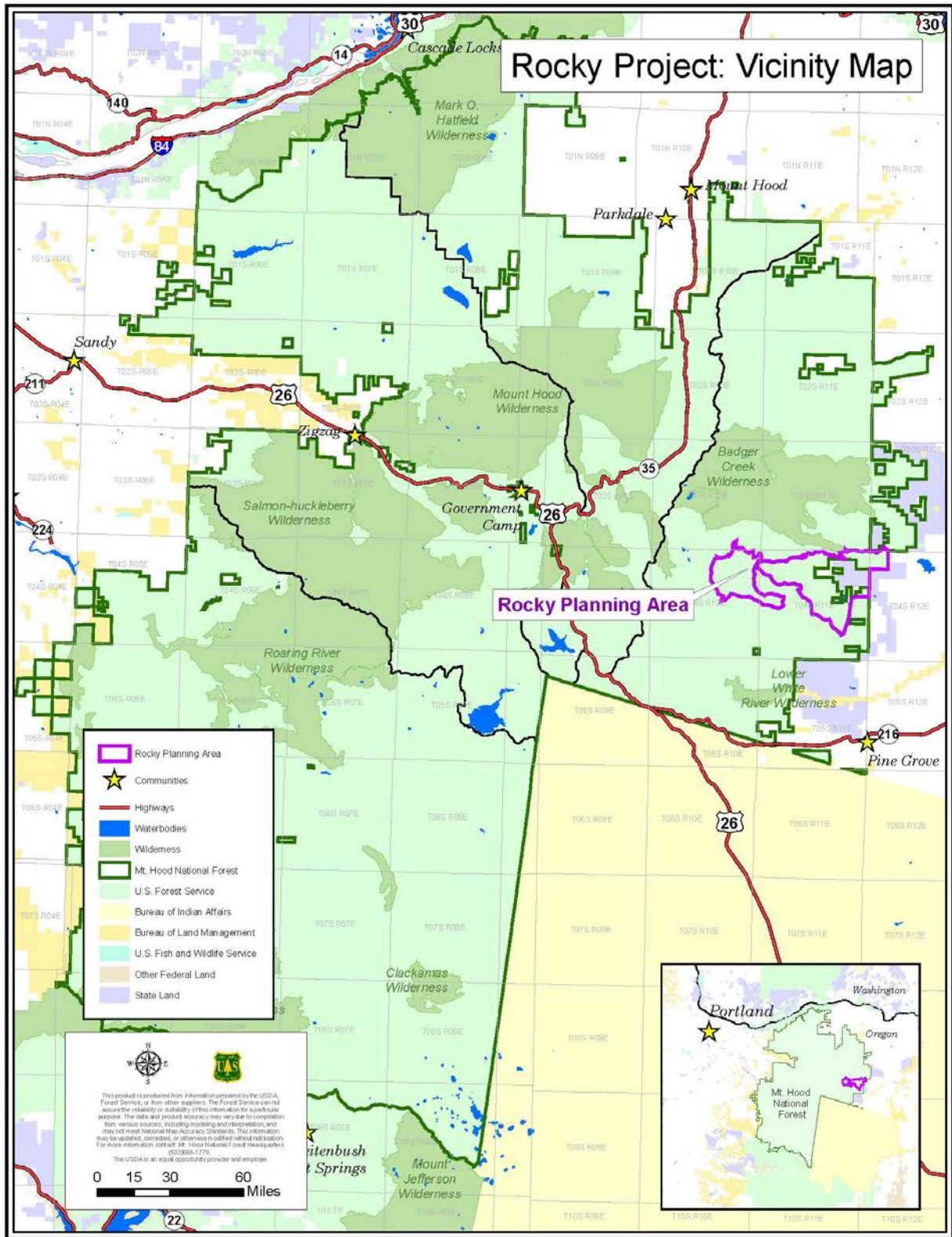
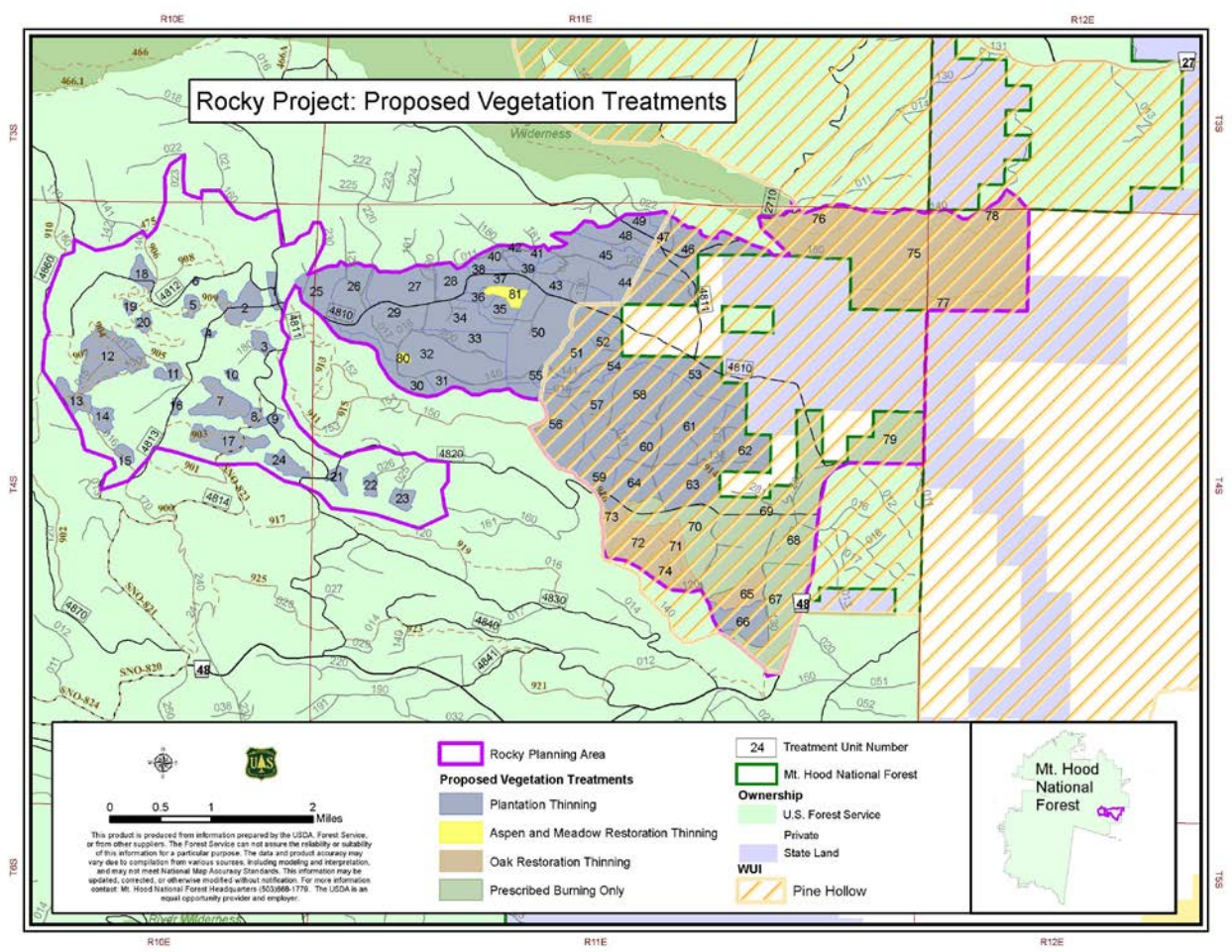


Rocky EA Appendix A



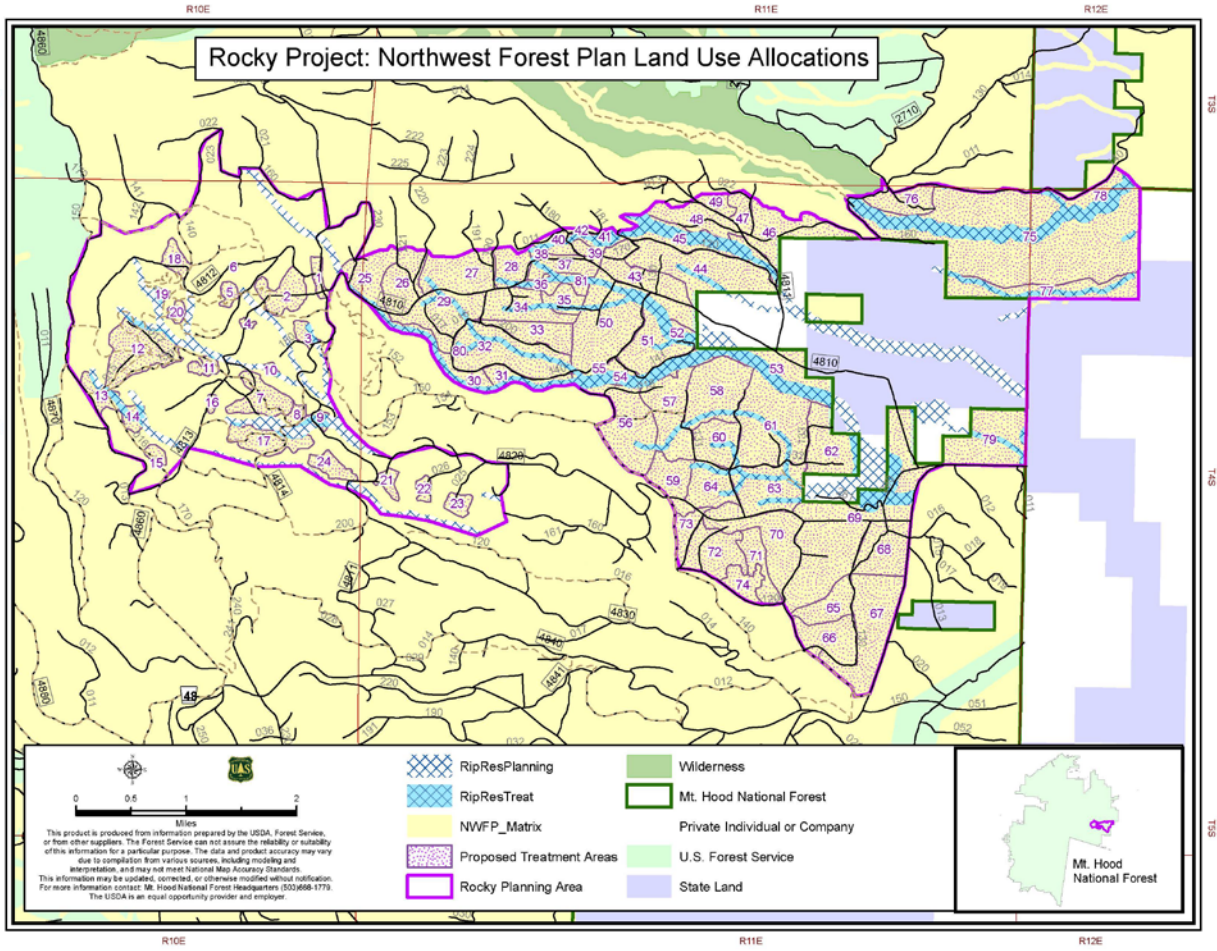


Rocky Project: Proposed Vegetation Treatments

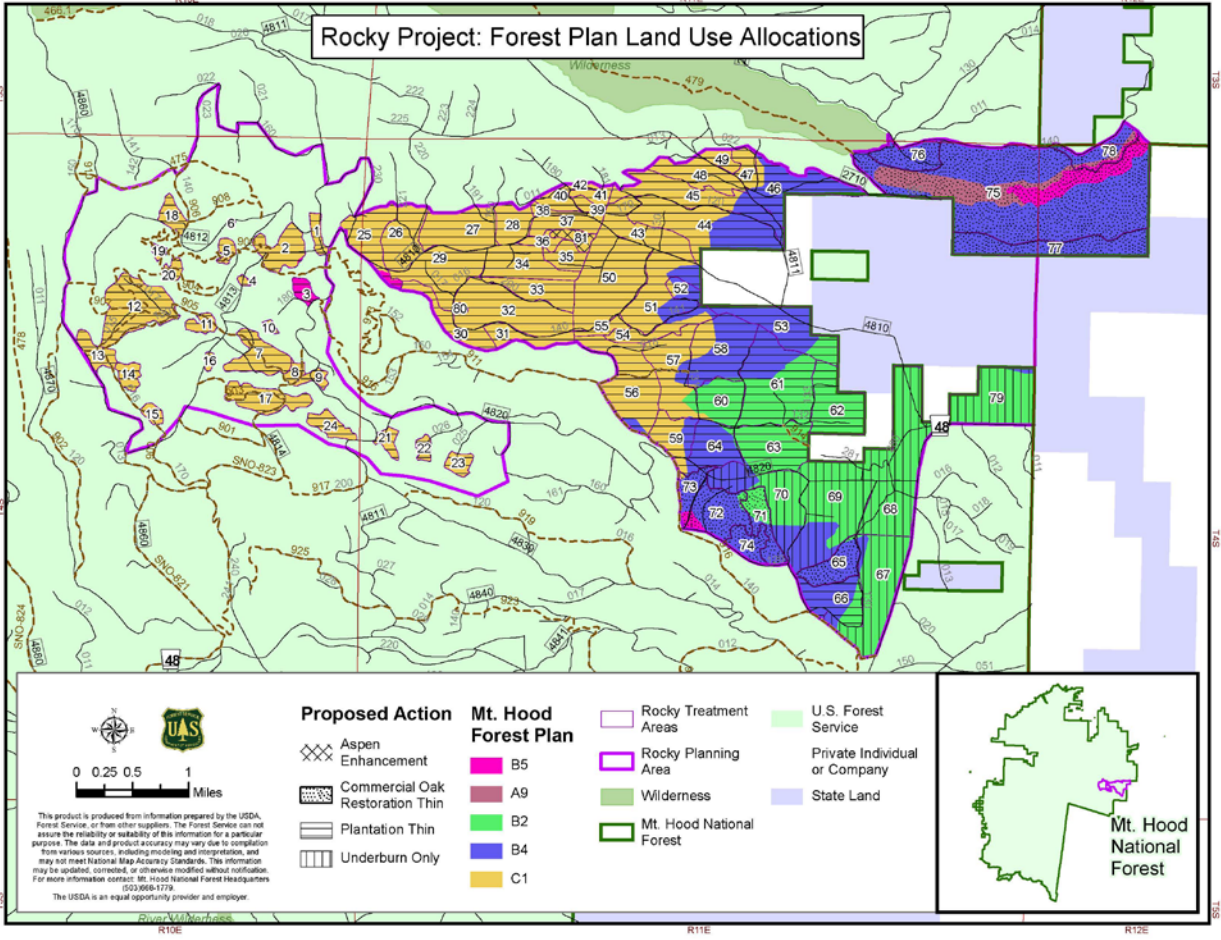
This product is produced from information prepared by the USDA, Forest Service, or from other suppliers. The Forest Service can not assure the reliability or suitability of this information for a particular purpose. The data and product accuracy may vary due to compilation from various sources, including modeling and interpretation, and may not meet National Map Accuracy Standards. This information may be updated, corrected, or otherwise modified without notification. For more information contact: Mt. Hood National Forest Headquarters (503)888-1719. The USDA is an equal opportunity provider and employer.

- Rocky Planning Area
- Proposed Vegetation Treatments**
- Plantation Thinning
- Aspen and Meadow Restoration Thinning
- Oak Restoration Thinning
- Prescribed Burning Only
- Mt. Hood National Forest
- Ownership**
- U.S. Forest Service
- Private
- State Land
- WUI**
- Pine Hollow





Rocky Project: Forest Plan Land Use Allocations



This product is produced from information prepared by the USDA, Forest Service, or from other suppliers. The Forest Service can not assure the reliability or suitability of this information for a particular purpose. The data and product accuracy may vary due to compilation from various sources, including modeling and interpretation, and may not meet National Map Accuracy Standards. This information may be updated, corrected, or otherwise modified without notification. For more information contact: Mt. Hood National Forest Headquarters (503)666-1779. The USDA is an equal opportunity provider and employer.

Proposed Action

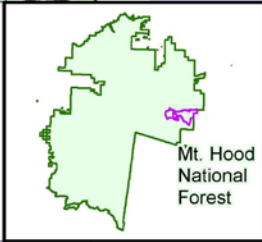
- Aspen Enhancement
- Commercial Oak Restoration Thin
- Plantation Thin
- Underburn Only

Mt. Hood Forest Plan

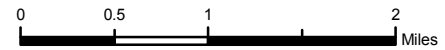
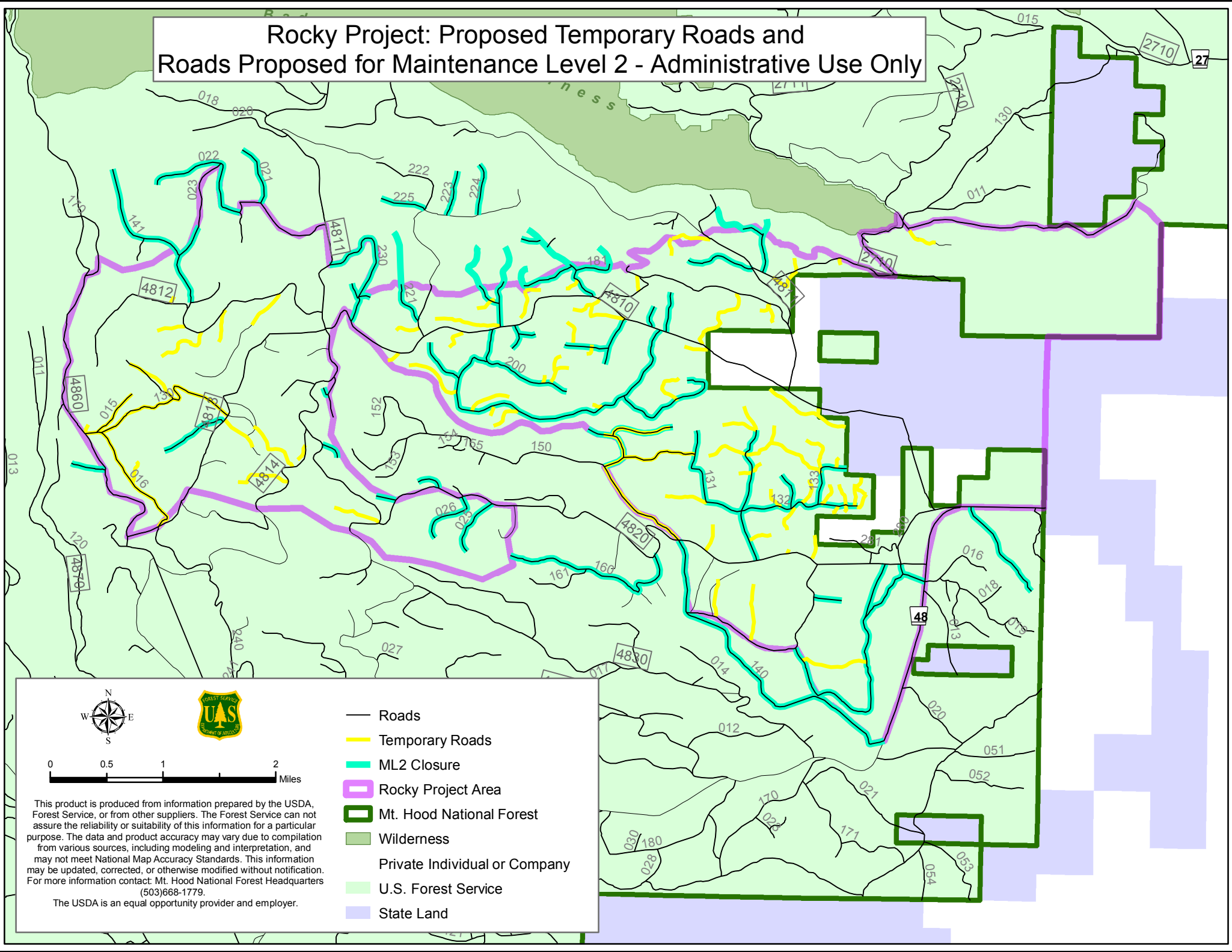
- B5
- A9
- B2
- B4
- C1

- Rocky Treatment Areas
- Rocky Planning Area
- Wilderness
- Mt. Hood National Forest

- U.S. Forest Service
- Private Individual or Company
- State Land



Rocky Project: Proposed Temporary Roads and Roads Proposed for Maintenance Level 2 - Administrative Use Only



- Roads
- Temporary Roads
- ML2 Closure
- Rocky Project Area
- Mt. Hood National Forest
- Wilderness
- Private Individual or Company
- U.S. Forest Service
- State Land

This product is produced from information prepared by the USDA, Forest Service, or from other suppliers. The Forest Service can not assure the reliability or suitability of this information for a particular purpose. The data and product accuracy may vary due to compilation from various sources, including modeling and interpretation, and may not meet National Map Accuracy Standards. This information may be updated, corrected, or otherwise modified without notification. For more information contact: Mt. Hood National Forest Headquarters (503)668-1779.

The USDA is an equal opportunity provider and employer.