

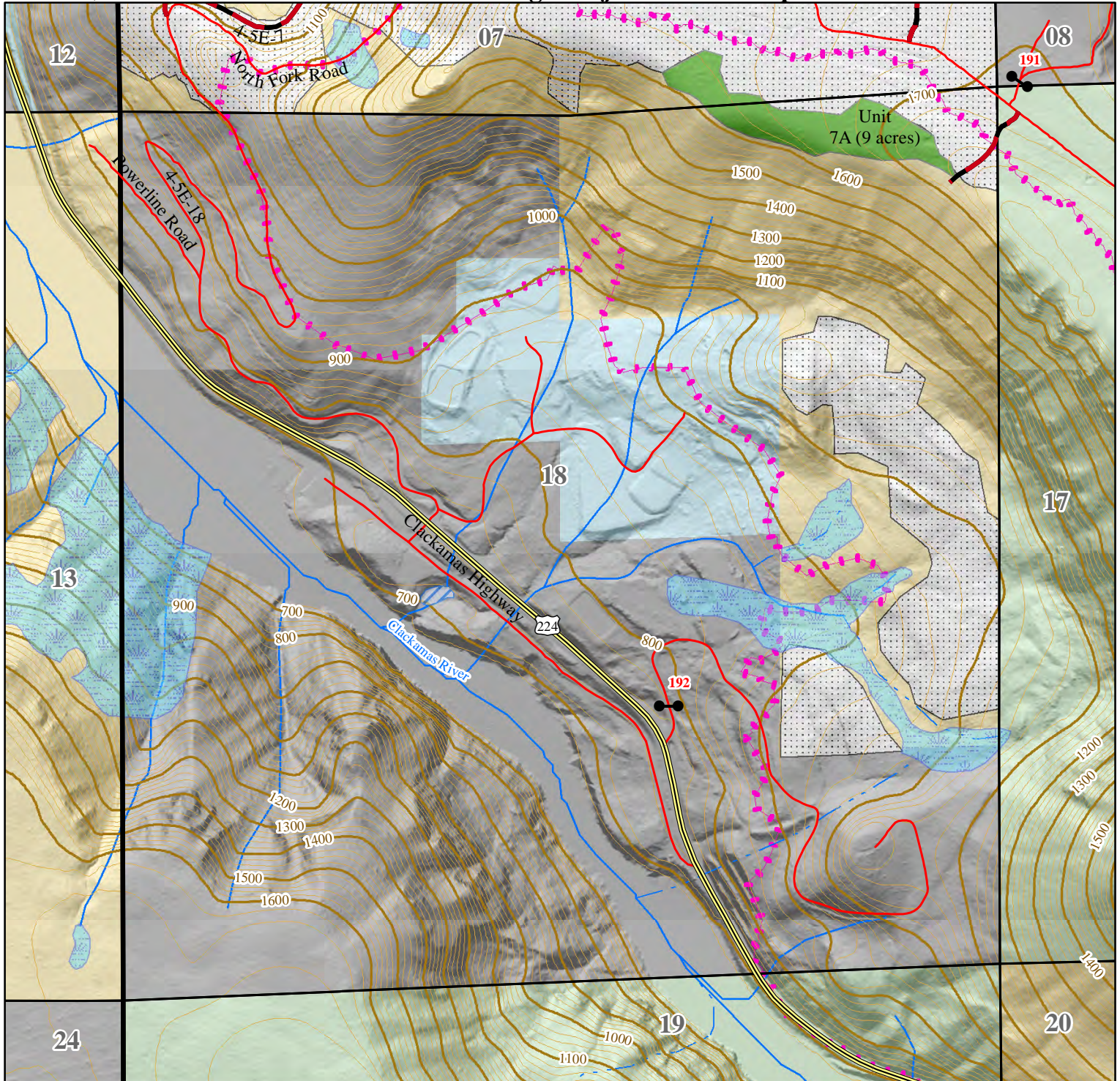
United States  
Department of the Interior  
**BUREAU OF LAND MANAGEMENT**

Salem District / Cascades Resource Area

March 18, 2015

**Little Chair Salvage Project Section Map**

T04S-R05E Sec 18



0 500 1,000  
Feet

Contour Interval: 20'

No warranty is made by the Bureau of Land Management as to the accuracy, reliability, or completeness of these data for individual or aggregate use with other data. Original data were compiled from various sources and may be updated without notification.

- Closed Gate
- casHighways
- Walk in Road
- Cascades Roads
- Lake / Pond
- Wet Area
- Perennial stream
- Intermittent stream
- 36 Pit fire perimeter
- Airstrip Timbersale Modified Boundary
- State Agency
- U.S. Forest Service
- Private Industrial
- BLM



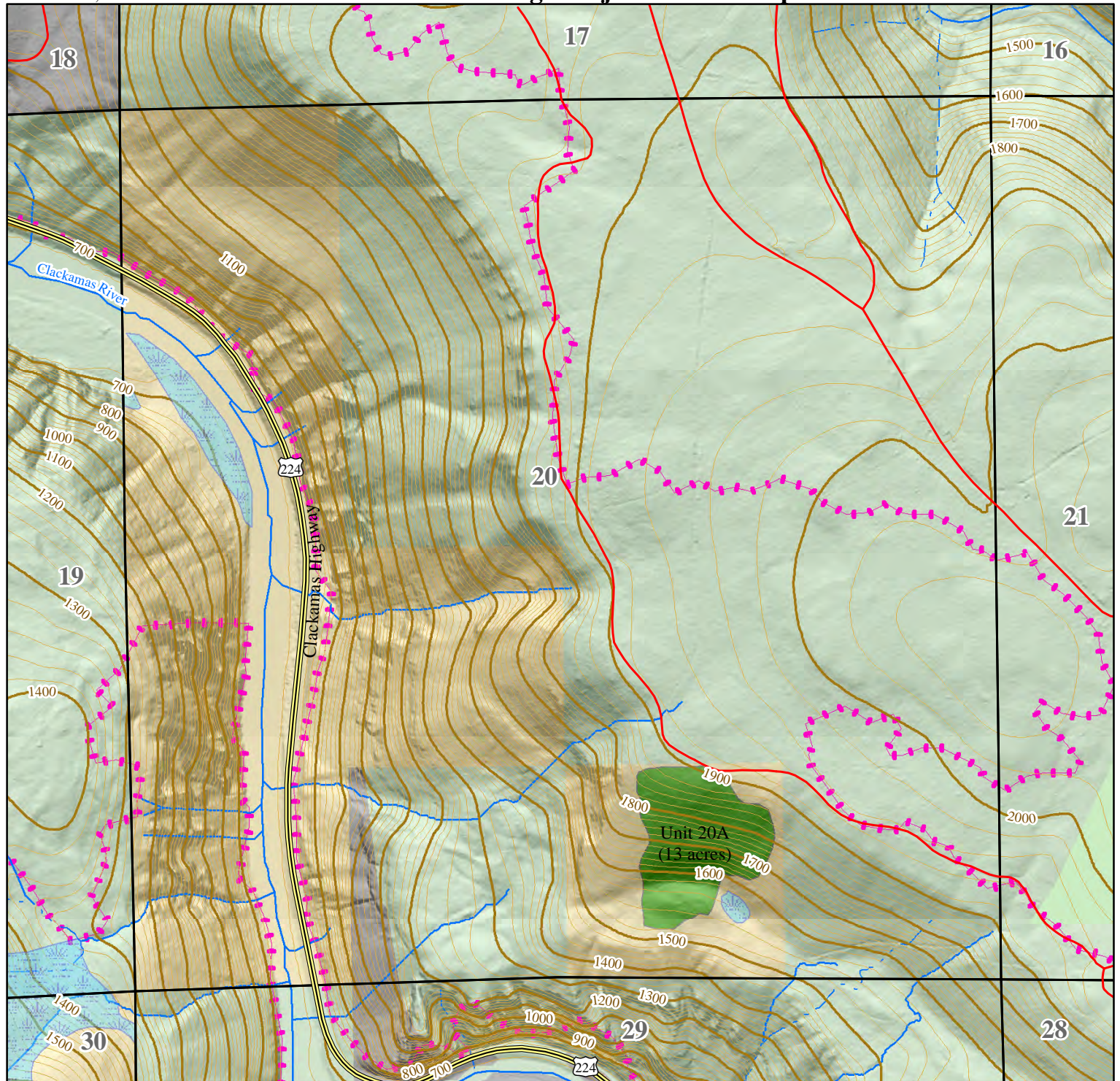


United States  
 Department of the Interior  
 BUREAU OF LAND MANAGEMENT  
 Salem District / Cascades Resource Area

March 18, 2015

**Little Chair Salvage Project Section Map**

T04S-R05E Sec 20



Contour Interval: 20'

0 500 1,000  
 Feet

No warranty is made by the Bureau of Land Management as to the accuracy, reliability, or completeness of these data for individual or aggregate use with other data. Original data were compiled from various sources and may be updated without notification.

- casHighways
- Cascades Roads
- Wet Area
- Perennial stream
- Intermittent stream
- 36 Pit fire perimeter

- U.S. Forest Service
- Private Industrial
- BLM





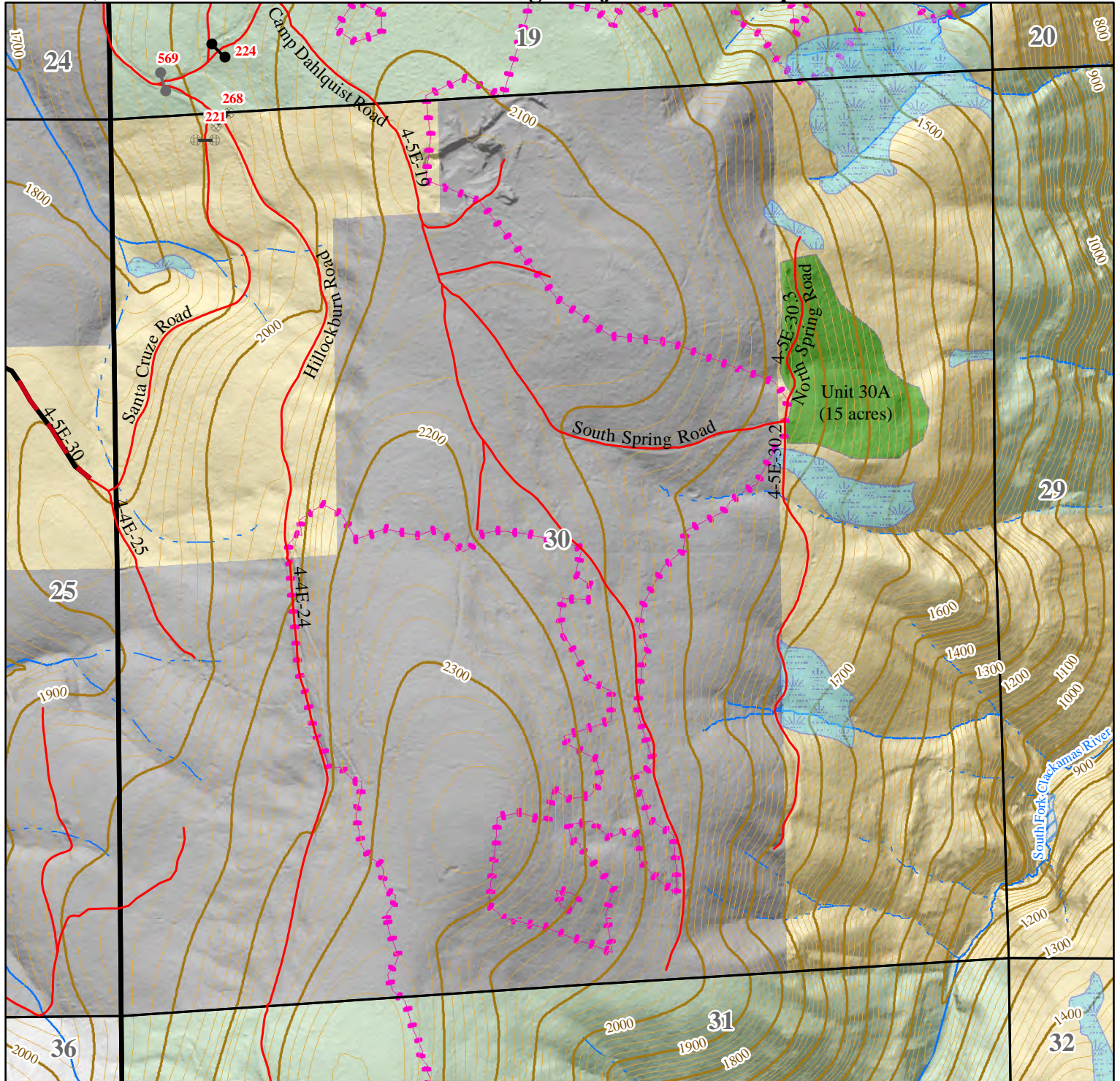
United States  
Department of the Interior  
**BUREAU OF LAND MANAGEMENT**

Salem District / Cascades Resource Area

March 18, 2015

**Little Chair Salvage Project Section Map**

T04S-R05E Sec 30



0 500 1,000  
Feet

Contour Interval: 20'

No warranty is made by the Bureau of Land Management as to the accuracy, reliability, or completeness of these data for individual or aggregate use with other data. Original data were compiled from various sources and may be updated without notification.

- Closed Gate
- Open Gate
- Gate - Closure not known
- casHighways
- Walk in Road
- Cascades Roads
- Lake / Pond
- Wet Area
- Perennial stream
- Intermittent stream
- 36 Pit fire perimeter
- U.S. Forest Service
- Private Industrial
- BLM

