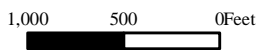
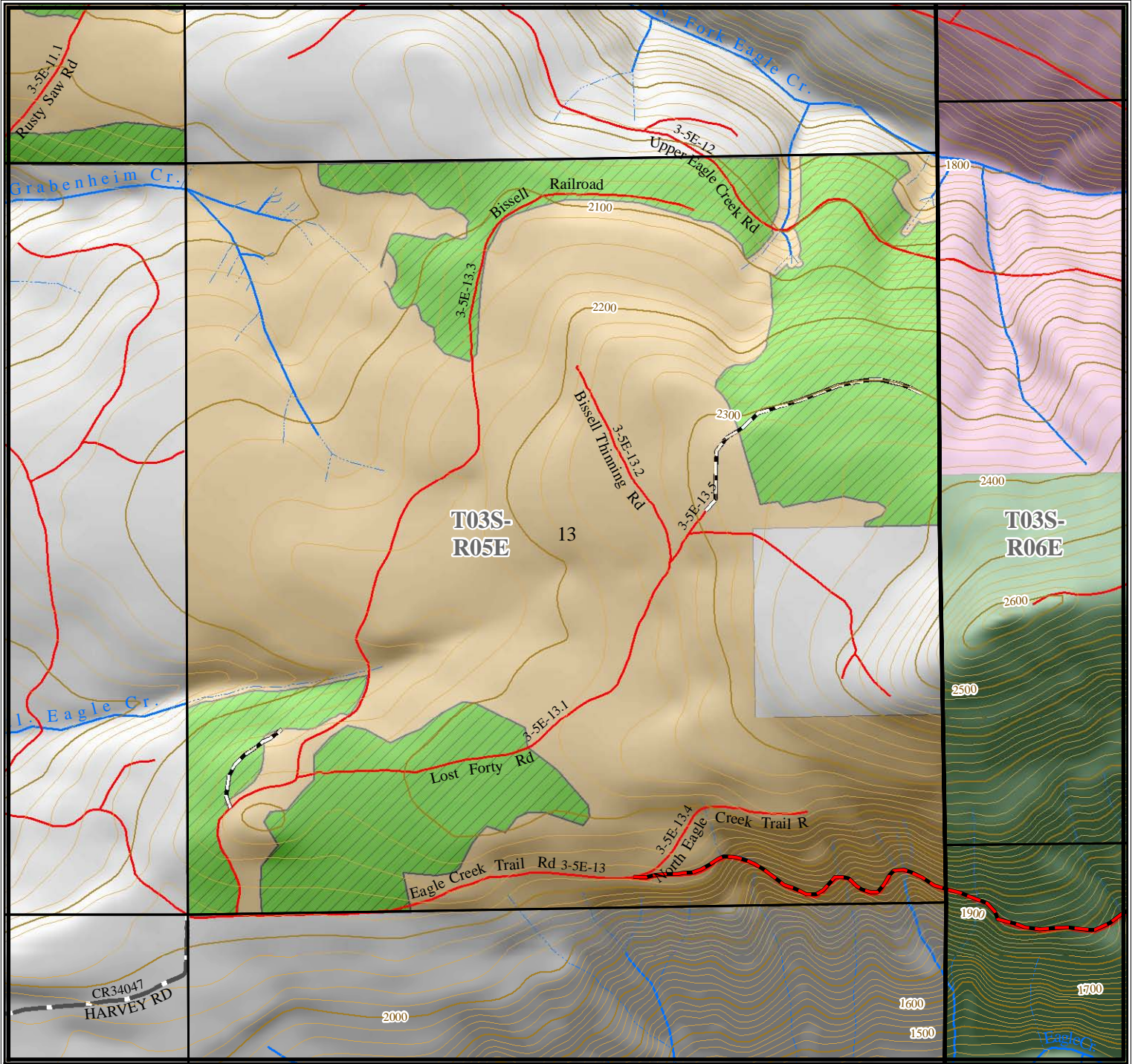


United States
 Department of the Interior
 BUREAU OF LAND MANAGEMENT
 Salem District / Cascades Resource Area
Take 3 Potential Thinning Areas

Jun 14, 2011

T03S-R05E Sec 13



No warranty is made by the Bureau of Land Management as to the accuracy, reliability, or completeness of these data for individual or aggregate use with other data. Original data were compiled from various sources and may be updated without notification.

- Intermittent
- Perennial
- Road
- Walk In Road
- Potential Road Work
- Potential Haul Rt.
- Potential Thinning Areas
- Private
- State
- Unknown
- Local Govt.
- BLM
- USFS

Contour Interval: 20'

