

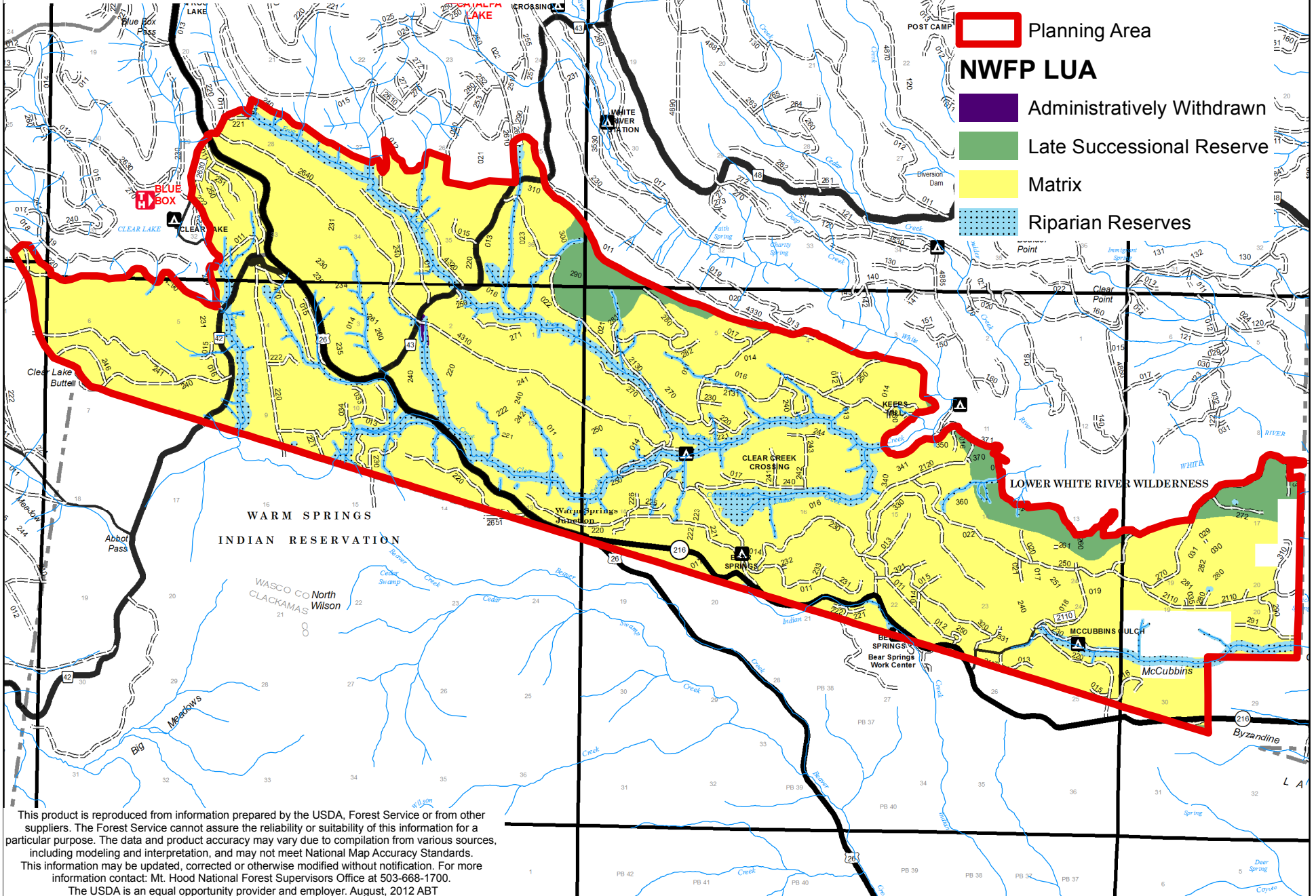
Crystal Clear Restoration Project - Northwest Forest Plan Land Use Allocations

Forest: Mt. Hood
District: Barlow & Hood River

0 0.5 1 2 Miles

Legend

- Planning Area
- NWFP LUA**
- Administratively Withdrawn
- Late Successional Reserve
- Matrix
- Riparian Reserves



This product is reproduced from information prepared by the USDA, Forest Service or from other suppliers. The Forest Service cannot assure the reliability or suitability of this information for a particular purpose. The data and product accuracy may vary due to compilation from various sources, including modeling and interpretation, and may not meet National Map Accuracy Standards. This information may be updated, corrected or otherwise modified without notification. For more information contact: Mt. Hood National Forest Supervisors Office at 503-668-1700. The USDA is an equal opportunity provider and employer. August, 2012 ABT